

BIM(Phospho-Ser69) Antibody

Catalog No: #11288

Package Size: #11288-1 50ul #11288-2 100ul

Orders: order@signalwayantibody.comSupport: tech@signalwayantibody.com

Description

| | |
|-----------------------|---|
| Product Name | BIM(Phospho-Ser69) Antibody |
| Host Species | Rabbit |
| Clonality | Polyclonal |
| Purification | Antibodies were produced by immunizing rabbits with synthetic phosphopeptide and KLH conjugates. Antibodies were purified by affinity-chromatography using epitope-specific phosphopeptide. Non-phospho specific antibodies were removed by chromatography using non-phosphopeptide. |
| Applications | IHC IF |
| Species Reactivity | Human;Mouse;Rat |
| Specificity | The antibody detects endogenous level of BIM only when phosphorylated at serine 69. |
| Immunogen Type | Peptide-KLH |
| Immunogen Description | Peptide sequence around phosphorylation site of serine 69 (P-A-S(p)-P-G) derived from Human BIM. |
| Conjugates | Unconjugated |
| Target Name | BIM |
| Modification | Phospho |
| Other Names | BCL2-like protein 11; BCL2L11; BOD; Bcl-2 related ovarian death protein; |
| Accession No. | Swiss-Prot: O43521NCBI Protein: NP_006529.1 |
| Concentration | 1.0mg/ml |
| Formulation | Supplied at 1.0mg/mL in phosphate buffered saline (without Mg ²⁺ and Ca ²⁺), pH 7.4, 150mM NaCl, 0.02% sodium azide and 50% glycerol. |
| Storage | Store at -20°C for long term preservation (recommended). Store at 4°C for short term use. |

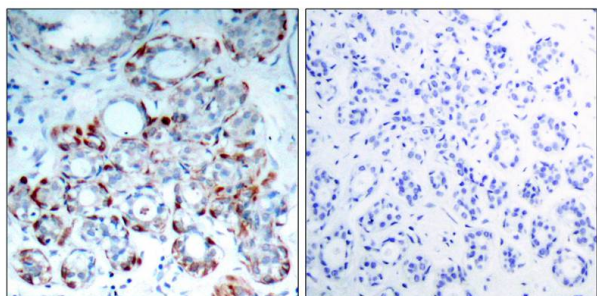
Application Details

Predicted MW: 23kd

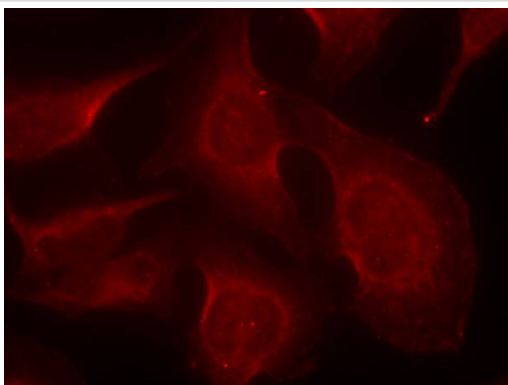
Immunohistochemistry: 1:50~1:100

Immunofluorescence: 1:100~1:200

Images



Immunohistochemical analysis of paraffin-embedded human breast carcinoma tissue using BIM(Phospho-Ser69) Antibody #11288(left) or the same antibody preincubated with blocking peptide(right).



Immunofluorescence staining of methanol-fixed HeLa cells using BIM(Phospho-Ser69) Antibody #11288.

Background

Induces apoptosis. Isoform BimL is more potent than isoform BimEL. Isoform Bim-a1, isoform Bim-a2 and isoform Bim-a3 induce apoptosis, although less potent than the isoforms BimEL, BimL and BimS. Isoform Bim-gamma induces apoptosis

Fukazawa H, et al. (2004) Mol Cancer Ther ; 3(10): 1281-1288

Luciano F, et al. (2003) Oncogene ; 22(43): 6785-6793

Published Papers

el at., miR-137 and miR-197 induce apoptosis and suppress tumorigenicity by targeting MCL-1 in multiple myeloma. In Clin Cancer Res on 2015 May 15 by Yijun Yang , Fei Li et al.. PMID:25724519 , , (2015)

[PMID:25724519](#)

Note: This product is for in vitro research use only and is not intended for use in humans or animals.