

IFNAR1 Subunit1 (phospho-Ser535/Ser539) Antibody

Catalog No: #11558



Package Size: #11558-1 50ul #11558-2 100ul

Orders: order@signalwayantibody.com

Support: tech@signalwayantibody.com

Description

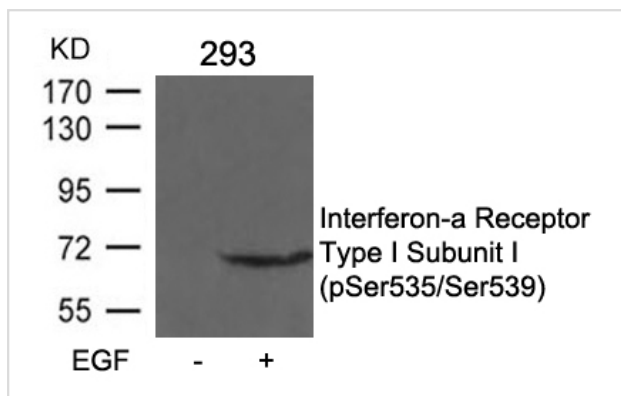
Product Name	IFNAR1 Subunit1 (phospho-Ser535/Ser539) Antibody
Host Species	Rabbit
Clonality	Polyclonal
Applications	WB
Species Reactivity	Hu
Specificity	The antibody detects endogenous level of MEK5 only when phosphorylated at serine 535 or 539.
Immunogen Type	Peptide-KLH
Immunogen Description	Peptide sequence around phosphorylation site of serine 535 or serine 539 (D-S(p)-G-N-Y-S(p)-N) derived from Human Interferon-a Receptor Type I Subunit I.
Target Name	IFNAR1 Subunit1
Modification	Phospho
Other Names	AVP, IFRC, IFNAR, IFNBR, IFN-alpha-REC
Concentration	1.0mg/ml

Application Details

Predicted MW: 70kd

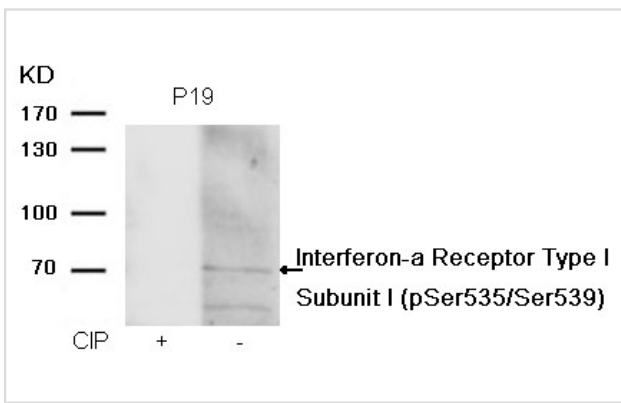
Western blotting: 1: 500~1: 1000

Images



Western blot analysis of extracts from 293 cells untreated or treated with EGF using Interferon-a Receptor Type I Subunit I (phospho-Ser535/Ser539) Antibody #11558.

Western blot analysis of extracts from P19 cells, treated with calf intestinal phosphatase (CIP), using Interferon- α Receptor Type I Subunit I (phospho-Ser535/Ser539) Antibody #11558.



Background

Associates with IFNAR2 to form the type I interferon receptor. Receptor for interferons alpha and beta. Binding to type I IFNs triggers tyrosine phosphorylation of a number of proteins including JAKs, TYK2, STAT proteins and IFNR alpha- and beta-subunits themselves.

Note: This product is for in vitro research use only and is not intended for use in humans or animals.