

c-Fos (Phospho-Thr232) Antibody

Catalog No: #11764



Package Size: #11764-1 50ul #11764-2 100ul

Orders: order@signalwayantibody.com

Support: tech@signalwayantibody.com

Description

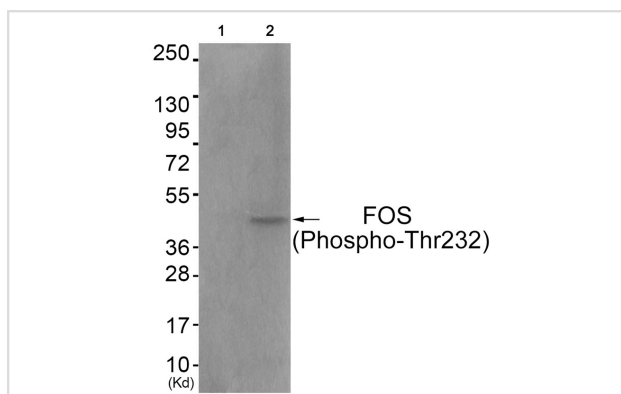
Product Name	c-Fos (Phospho-Thr232) Antibody
Host Species	Rabbit
Clonality	Polyclonal
Purification	Antibodies were produced by immunizing rabbits with synthetic phosphopeptide and KLH conjugates. Antibodies were purified by affinity-chromatography using epitope-specific phosphopeptide. Non-phospho specific antibodies were removed by chromatography using non-phosphopeptide.
Applications	WB IHC
Species Reactivity	Human
Specificity	The antibody detects endogenous levels of FOS only when phosphorylated at threonine 232.
Immunogen Type	Peptide-KLH
Immunogen Description	Peptide sequence around phosphorylation site of threonine 232(V-A-T(p)-P-E) derived from Human FOS .
Conjugates	Unconjugated
Target Name	FOS
Modification	Phospho
Other Names	FOS; G0S7; Cellular oncogene fos;
Accession No.	Swiss-Prot#: P01100; NCBI Gene#: 2353; NCBI Protein#: NP_005243.1.
SDS-PAGE MW	48kd
Concentration	1.0mg/ml
Formulation	Rabbit IgG in phosphate buffered saline (without Mg ²⁺ and Ca ²⁺), pH 7.4, 150mM NaCl, 0.02% sodium azide and 50% glycerol.
Storage	Store at -20°C/1 year

Application Details

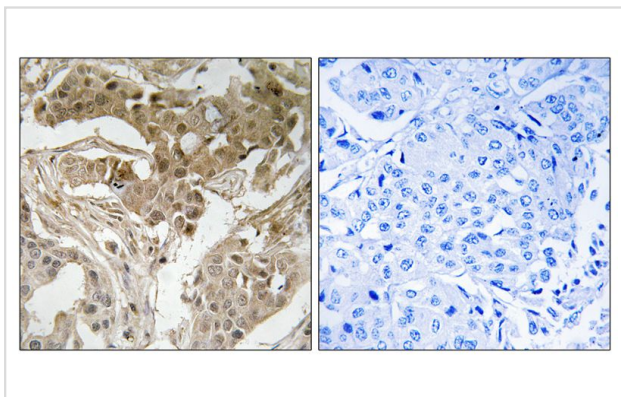
Western blotting: 1:500~1:1000

Immunohistochemistry: 1:50~1:100

Images



Western blot analysis of extracts from COS7 cells (Lane 2), using FOS (Phospho-Thr232) Antibody #11764. The lane on the left is treated with antigen-specific peptide.



Immunohistochemical analysis of paraffin-embedded human breast carcinoma tissue using FOS (Phospho-Thr232) antibody #11764 (left) or the same antibody preincubated with blocking peptide (right).

Background

Nuclear phosphoprotein which forms a tight but non-covalently linked complex with the JUN/AP-1 transcription factor. In the heterodimer, FOS and JUN/AP-1 basic regions each seems to interact with symmetrical DNA half sites. On TGF-beta activation, forms a multimeric SMAD3/SMAD4/JUN/FOS complex at the AP1/SMAD-binding site to regulate TGF-beta-mediated signaling. Has a critical function in regulating the development of cells destined to form and maintain the skeleton. It is thought to have an important role in signal transduction, cell proliferation and differentiation. In growing cells, activates phospholipid synthesis, possibly by activating CDS1 and PI4K2A. This activity requires Tyr-dephosphorylation and association with the endoplasmic reticulum.

van Straaten F. Proc. Natl. Acad. Sci. U.S.A. 80:3183-3187(1983).

Hai T., Genes Dev. 3:2083-2090(1989).

Heilig R., Nature 421:601-607(2003).

Published Papers

Yue Hui, Li Yan, Yang Tao, Wang Yecheng, Bao Qing, Xu Yajing, Liu Xiangyu, Miao Yao, Yang Mingying, Mao Chuanbin et al., Filamentous phages as tumour-targeting immunotherapeutic bionanofibres, Nature nanotechnology, (2025)

[PMID:39468354](#)

Note: This product is for in vitro research use only and is not intended for use in humans or animals.