

IKK- alpha/ beta (Phospho-Ser180/181) Antibody

Catalog No: #11930



Package Size: #11930-1 50ul #11930-2 100ul

Orders: order@signalwayantibody.comSupport: tech@signalwayantibody.com

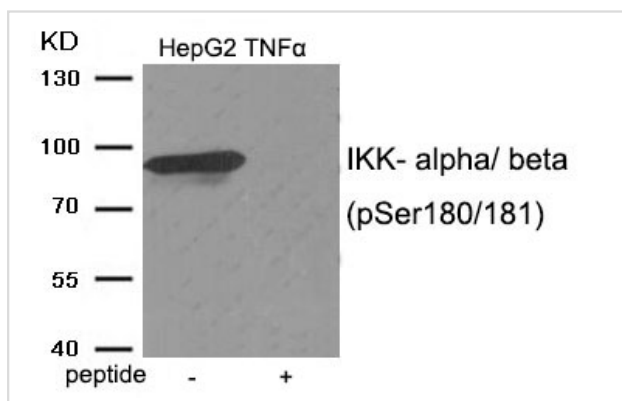
Description

Product Name	IKK- alpha/ beta (Phospho-Ser180/181) Antibody
Host Species	Rabbit
Clonality	Polyclonal
Purification	Antibodies were produced by immunizing rabbits with synthetic phosphopeptide and KLH conjugates. Antibodies were purified by affinity-chromatography using epitope-specific phosphopeptide. Non-phospho specific antibodies were removed by chromatography using non-phosphopeptide.
Applications	WB
Species Reactivity	Human;Mouse;Rat
Specificity	The antibody detects endogenous level of IKK- alpha/beta only when phosphorylated at serine 180/181.
Immunogen Type	Peptide-KLH
Immunogen Description	Peptide sequence around phosphorylation site of serine 180/181 (C-T-S(p)-F-V) derived from Human IKK- alpha/ beta.
Conjugates	Unconjugated
Target Name	IKK- alpha/ beta
Modification	Phospho
Other Names	FLJ40509; I-kappa-B kinase; IKKKB; kinase beta; NFKBKB
Accession No.	Swiss-Prot#: O15111/O14920; NCBI Gene#: 1147; NCBI Protein#: NP_001269.3
Calculated MW	85 kDa
SDS-PAGE MW	85 kDa
Concentration	1.0mg/ml
Formulation	Rabbit IgG in phosphate buffered saline (without Mg ²⁺ and Ca ²⁺), pH 7.4, 150mM NaCl, 0.02% sodium azide and 50% glycerol.
Storage	Store at -20°C/1 year

Application Details

Western blotting: 1:500~1:1000

Images



Western blot analysis of extracts from HepG2 cells treated with TNF using IKK- alpha/ beta (Phospho-Ser180/181) antibody #11930. The lane on the right is treated with the antigen-specific peptide.

Background

Acts as part of the IKK complex in the conventional pathway of NF-kappa-B activation and phosphorylates inhibitors of NF-kappa-B thus leading to the dissociation of the inhibitor/NF-kappa-B complex and ultimately the degradation of the inhibitor. Also phosphorylates NCOA3.

Hafeez BB, et al. (2008) *Cancer Res* 68, 8564-72

Cahill CM, Rogers JT (2008) *J Biol Chem* 283, 25900-12

Encinas M, et al. (2008) *Cell Death Differ* 15, 1510-21

Published Papers

Ying Wan;Li Han;Lu Rong;Shuyuan Yang;Lu Song;Na Wu;Zhenguo Liu;Jing Gan et al., Inhibition of BET Protein Function Suppressed the Overactivation of the Canonical NF-κB Signaling Pathway in 6-OHDA-Lesioned Rat Model of Levodopa-Induced Dyskinesia, , (2022)

[PMID:35801173](https://pubmed.ncbi.nlm.nih.gov/35801173/)

Note: This product is for in vitro research use only and is not intended for use in humans or animals.