

## GR (Phospho-Ser226) Antibody

Catalog No: #11937

Package Size: #11937-1 50ul #11937-2 100ul

Orders: [order@signalwayantibody.com](mailto:order@signalwayantibody.com)Support: [tech@signalwayantibody.com](mailto:tech@signalwayantibody.com)

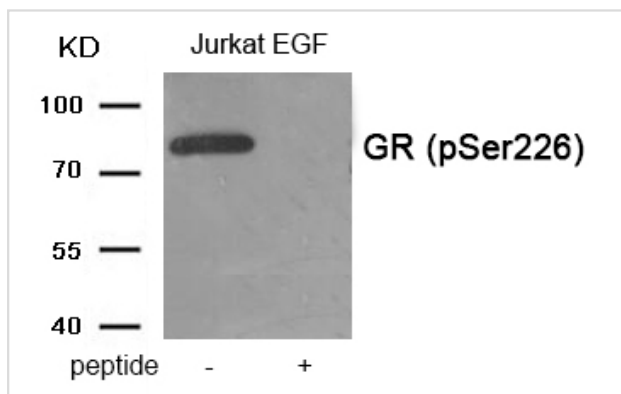
## Description

Product Name	GR (Phospho-Ser226) Antibody
Host Species	Rabbit
Clonality	Polyclonal
Purification	Antibodies were produced by immunizing rabbits with synthetic phosphopeptide and KLH conjugates. Antibodies were purified by affinity-chromatography using epitope-specific phosphopeptide. Non-phospho specific antibodies were removed by chromatography using non-phosphopeptide.
Applications	WB
Species Reactivity	Hu
Specificity	The antibody detects endogenous level of GR only when phosphorylated at serine 226.
Immunogen Type	Peptide-KLH
Immunogen Description	Peptide sequence around phosphorylation site of serine 226 (L-L-S(p)-P-L) derived from Human GR.
Target Name	GR
Modification	Phospho
Other Names	GCCR; GCR; GRL; NR3C1;
Accession No.	Swiss-Prot#: P04150; NCBI Gene#: 2908; NCBI Protein#: NP_000167.1
SDS-PAGE MW	86kd
Concentration	1.0mg/ml
Formulation	Rabbit IgG in phosphate buffered saline (without Mg <sup>2+</sup> and Ca <sup>2+</sup> ), pH 7.4, 150mM NaCl, 0.02% sodium azide and 50% glycerol.
Storage	Store at -20°C/1 year

## Application Details

Western blotting: 1:500~1:1000

## Images



Western blot analysis of extracts from Jurkat cells treated with EGF using Phospho-GR (Ser226) antibody #11937. The lane on the right is treated with the antigen-specific peptide.

## Background

---

Receptor for glucocorticoids (GC). Has a dual mode of action: as a transcription factor that binds to glucocorticoid response elements (GRE), both for nuclear and mitochondrial DNA, and as a modulator of other transcription factors. Affects inflammatory responses, cellular proliferation and differentiation in target tissues. Could act as a coactivator for STAT5-dependent transcription upon growth hormone (GH) stimulation and could reveal an essential role of hepatic GR in the control of body growth. Involved in chromatin remodeling. Plays a significant role in transactivation.

Wehmeyer L, Du Toit A, Lang DM, Hapgood JP (2014) J Biol Chem 289, 10235-51

Bouazza B, et al. (2014) Am J Respir Cell Mol Biol 50, 301-15

Lee MS, et al. (2013) Behav Brain Res 236, 56-61

---

Note: This product is for in vitro research use only and is not intended for use in humans or animals.