

Histone H2A(Phospho-Ser129) Rabbit Polyclonal Antibody

Catalog No: #12095

Package Size: #12095-1 50ul #12095-2 100ul

Orders: order@signalwayantibody.comSupport: tech@signalwayantibody.com

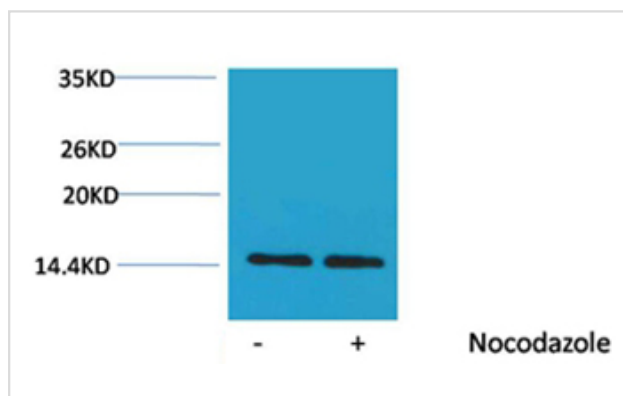
Description

Product Name	Histone H2A(Phospho-Ser129) Rabbit Polyclonal Antibody
Host Species	Rabbit
Clonality	Polyclonal
Purification	Antibodies were purified by affinity-chromatography using epitope-specific phosphopeptide. Non-phospho specific antibodies were removed by chromatography using non-phosphopeptide.
Applications	WB
Species Reactivity	Human;Mouse;Rat
Specificity	The Histone H2A(Phospho Ser129) Rabbit Polyclonal Antibody detects endogenous Histone H2A (Phospho Ser129) protein.
Immunogen Type	peptide
Immunogen Description	Peptide sequence around phosphorylation site of serine 129(K-A-Q-S(p)-K) derived from Human Histone H2A.
Conjugates	Unconjugated
Target Name	Histone H2A(Phospho-Ser129)
Modification	Phospho
Other Names	H2A 615 antibody; H2A GL101 antibody; H2A.1 antibody; HIST1H2AE antibody; MGC74460 antibody
Accession No.	Swiss-Prot#:Q96QV6
SDS-PAGE MW	14kd
Concentration	1.0mg/ml
Formulation	Rabbit Antiserum, containing 0.02% sodium azide as Preservative and 50% Glycerol.
Storage	Store at -20°C

Application Details

Western blotting: 1:1000~1:2000

Images



Western blot analysis of extracts from HeLa cells, untreated (-) or treated with Nocodazole (1 µg/ml, 24 hr; +), using #12095 diluted at 1:2,000.

Background

Histone H2A is one of the five main histone proteins involved in the structure of chromatin in eukaryotic cells. Core component of nucleosome. Nucleosomes wrap and compact DNA into chromatin, limiting DNA accessibility to the cellular machineries which require DNA as a template.

Note: This product is for in vitro research use only and is not intended for use in humans or animals.