

Histone H2A.X(Phospho-Ser139) Rabbit Polyclonal Antibody

Catalog No: #12100

Package Size: #12100-1 50ul #12100-2 100ul

Orders: order@signalwayantibody.comSupport: tech@signalwayantibody.com

Description

Product Name	Histone H2A.X(Phospho-Ser139) Rabbit Polyclonal Antibody
Host Species	Rabbit
Clonality	Polyclonal
Purification	Antibodies were purified by affinity-chromatography using epitope-specific phosphopeptide. Non-phospho specific antibodies were removed by chromatography using non-phosphopeptide.
Applications	WB IHC IF
Species Reactivity	Human Mouse Rat
Specificity	The Histone H2A.X(Phospho Ser139) Rabbit Polyclonal Antibody detects endogenous Histone H2A.X(PhosphoSer139) protein.
Immunogen Description	Peptide sequence around phosphorylation site of serine 139(Q-A-S(p)-Q-E) derived from Human Histone H2A.X.
Target Name	Histone H2A.X(Phospho-Ser139)
Modification	Phospho
Other Names	H2A histone family member X antibody; H2AFX antibody; H2AX Histoneh antibody; Histone H2AX antibody
Accession No.	Swiss-Prot#:P16104
SDS-PAGE MW	15kd
Concentration	1.0mg/ml
Formulation	Rabbit Antiserum, containing 0.02% sodium azide as Preservative and 50% Glycerol.
Storage	Store at -20°C

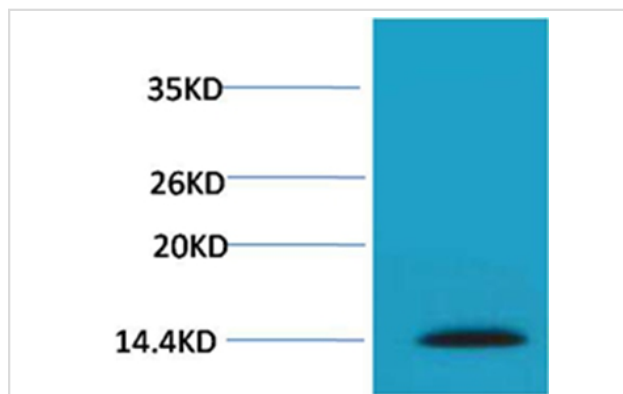
Application Details

WB 1:500 - 1:2000

IHC 1:100 - 1:300

IF 1:50-200

Images



Western blot analysis of extracts from Hela cells, using #12100 diluted at 1:2,000.

Background

Histone H2A which replaces conventional H2A in a subset of nucleosomes. Nucleosomes wrap and compact DNA into chromatin, limiting DNA accessibility to the cellular machineries which require DNA as a template.

Note: This product is for in vitro research use only and is not intended for use in humans or animals.