

# Histone H2B(Phospho-Ser14) Rabbit Polyclonal Antibody

Catalog No: #12102

Package Size: #12102-1 50ul #12102-2 100ul

Orders: [order@signalwayantibody.com](mailto:order@signalwayantibody.com)Support: [tech@signalwayantibody.com](mailto:tech@signalwayantibody.com)

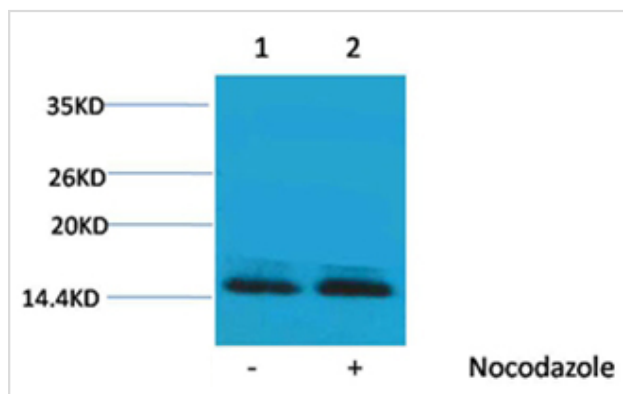
## Description

Product Name	Histone H2B(Phospho-Ser14) Rabbit Polyclonal Antibody
Host Species	Rabbit
Clonality	Polyclonal
Purification	Antibodies were purified by affinity-chromatography using epitope-specific phosphopeptide. Non-phospho specific antibodies were removed by chromatography using non-phosphopeptide.
Applications	WB
Species Reactivity	Human;Mouse;Rat
Specificity	The Histone H2B(Phospho Ser14) antibody can detects endogenous Histone H2B(Phospho Ser14) protein.
Immunogen Type	peptide
Immunogen Description	Peptide sequence around phosphorylation site of serine 14(K-G-S(p)-K-K) derived from Human Histone H2B.
Conjugates	Unconjugated
Target Name	Histone H2B(Phospho-Ser14)
Modification	Phospho
Other Names	H2B GL105 antibody; H2B.1 antibody; Histone H2B type 1B antibody; HIST1H2BB antibody
Accession No.	Swiss-Prot#:P33778
SDS-PAGE MW	14kd
Concentration	1.0mg/ml
Formulation	Rabbit Antiserum, containing 0.02% sodium azide as Preservative and 50% Glycerol.
Storage	Store at -20°C

## Application Details

Western blotting: 1:1000~1:2000

## Images



Western blot analysis of extracts from HeLa cells, untreated (-) or treated with Nocodazole (1 µg/ml, 24 hr; +), using #12102 diluted at 1:2,000.

## Background

---

Histone H2B is one of the 5 main histone proteins involved in the structure of chromatin in eukaryotic cells.

---

Note: This product is for in vitro research use only and is not intended for use in humans or animals.