

PKC δ (Phospho-Thr507) Polyclonal Antibody

Catalog No: #12218

Package Size: #12218-1 50ul #12218-2 100ul

Orders: order@signalwayantibody.comSupport: tech@signalwayantibody.com

Description

| | |
|-----------------------|---|
| Product Name | PKC δ (Phospho-Thr507) Polyclonal Antibody |
| Host Species | Rabbit |
| Clonality | Polyclonal |
| Purification | The antibody was affinity-purified from rabbit antiserum by affinity-chromatography using epitope-specific immunogen. |
| Applications | WB IHC ELISA |
| Species Reactivity | Human;Mouse;Rat |
| Specificity | Phospho-PKC δ (T507) Polyclonal Antibody detects endogenous levels of PKC δ protein only when phosphorylated at T507. |
| Immunogen Type | peptide |
| Immunogen Description | Synthesized peptide derived from human PKC δ around the phosphorylation site of T507. |
| Conjugates | Unconjugated |
| Target Name | PKC δ |
| Modification | Phospho |
| Other Names | PRKCD; Protein kinase C delta type; Tyrosine-protein kinase PRKCD; nPKC-delta |
| Accession No. | Swiss-Prot: Q05655NCBI Gene ID: 5580 |
| Target Species | human |
| SDS-PAGE MW | 78kd |
| Concentration | 1mg/ml |
| Formulation | Liquid in PBS containing 50% glycerol, 0.5% BSA and 0.02% sodium azide. |
| Storage | Store at -20°C/1 year |

Application Details

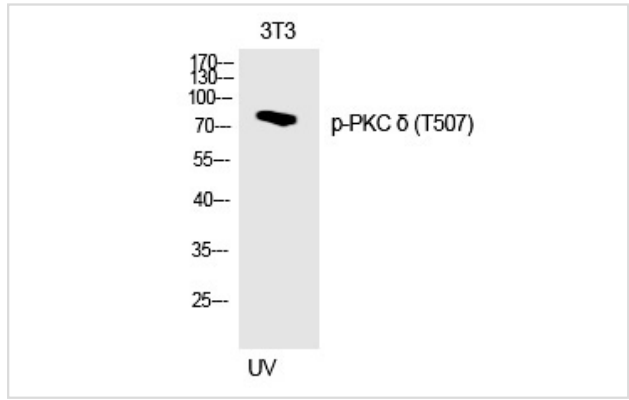
Western blotting: 1/500 - 1/2000

Immunohistochemistry: 1/100 - 1/300

ELISA: 1/20000

Not yet tested in other applications

Images



Western Blot analysis of 3T3 cells using Phospho-PKC δ (T507) Polyclonal Antibody

Note: This product is for in vitro research use only and is not intended for use in humans or animals.