

ARK-1 (Phospho-Thr288) Antibody

Catalog No: #12301



Package Size: #12301-1 50ul #12301-2 100ul

Orders: order@signalwayantibody.comSupport: tech@signalwayantibody.com

Description

Product Name	ARK-1 (Phospho-Thr288) Antibody
Host Species	Rabbit
Clonality	Polyclonal
Purification	The antibody was affinity-purified from rabbit antiserum by affinity-chromatography using epitope-specific immunogen.
Applications	WB;IHC;ELISA
Species Reactivity	Human;Mouse;Rat
Specificity	Phospho-ARK-1 (T288) Polyclonal Antibody detects endogenous levels of ARK-1 protein only when phosphorylated at T288.
Immunogen Type	peptide
Immunogen Description	Synthesized peptide derived from human ARK-1 around the phosphorylation site of T288.
Conjugates	Unconjugated
Target Name	ARK-1
Modification	Phospho
Other Names	AURKA; AIK; AIRK1; ARK1; AURA; AYK1; BTAK; IAK1; STK15; STK6; Aurora kinase A; Aurora 2; Aurora/IPL1-related kinase 1; ARK-1; Aurora-related kinase 1; hARK1; Breast tumor-amplified kinase; Serine/threonine-protein kinase 15; Serine/threonin
Accession No.	Swiss-Prot: O14965NCBI Gene ID: 6790
Target Species	human
SDS-PAGE MW	45kd
Concentration	1mg/ml
Formulation	Liquid in PBS containing 50% glycerol, 0.5% BSA and 0.02% sodium azide.
Storage	Store at -20°C/1 year

Application Details

Western blotting: 1/500 - 1/2000

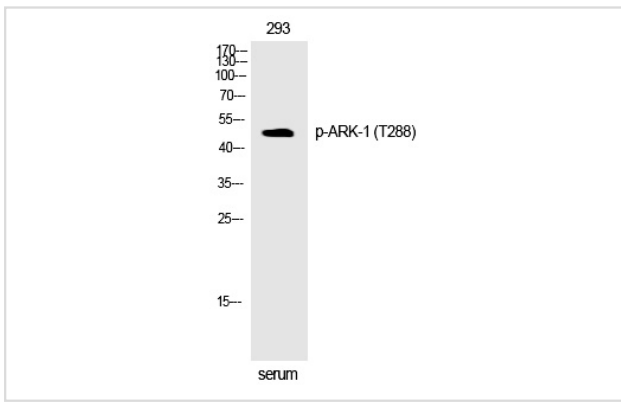
Immunohistochemistry: 1/100 - 1/300

ELISA: 1/5000

Not yet tested in other applications

Images

Western Blot analysis of 293 cells using Phospho-ARK-1 (T288) Polyclonal Antibody



Published Papers

el at., PAK1-Dependent Regulation of Microtubule Organization and Spindle Migration Is Essential for the Metaphase I β Metaphase II Transition in Porcine Oocytes In Biomolecules on 2024 Feb 17 by Lei Peng, Yijing He,et al..PMID:38397472, , (2024)
[PMID:38397472](#)

Note: This product is for in vitro research use only and is not intended for use in humans or animals.