

MYPT1 (Phospho-Thr853) Polyclonal Antibody

Catalog No: #12302



Package Size: #12302-1 50ul #12302-2 100ul

Orders: order@signalwayantibody.comSupport: tech@signalwayantibody.com

Description

Product Name	MYPT1 (Phospho-Thr853) Polyclonal Antibody
Host Species	Rabbit
Clonality	Polyclonal
Isotype	IgG
Purification	The antibody was affinity-purified from rabbit antiserum by affinity-chromatography using epitope-specific immunogen.
Applications	WB IHC ELISA
Species Reactivity	Human;Mouse;Rat
Specificity	Phospho-MYPT1 (T853) Polyclonal Antibody detects endogenous levels of MYPT1 protein only when phosphorylated at T853.
Immunogen Type	peptide
Immunogen Description	Synthesized peptide derived from human MYPT1 around the phosphorylation site of T853.
Conjugates	Unconjugated
Target Name	MYPT1
Modification	Phospho
Other Names	PPP1R12A; MBS; MYPT1; Protein phosphatase 1 regulatory subunit 12A; Myosin phosphatase-targeting subunit 1; Myosin phosphatase target subunit 1; Protein phosphatase myosin-binding subunit
Accession No.	Swiss-Prot: O14974NCBI Gene ID: 4659
Target Species	human
SDS-PAGE MW	130kd
Concentration	1mg/ml
Formulation	Liquid in PBS containing 50% glycerol, 0.5% BSA and 0.02% sodium azide.
Storage	Store at -20°C/1 year

Application Details

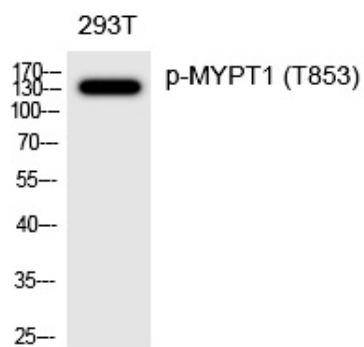
Western blotting: 1/500 - 1/2000

Immunohistochemistry: 1/100 - 1/300

ELISA: 1/5000

Not yet tested in other applications

Images



Western Blot analysis of 293T cells using Phospho-MYPT1 (T853) Polyclonal Antibody



Western Blot analysis of 293T AD293 22RV1 HELA cells using Phospho-MYPT1 (T853) Polyclonal Antibody

Note: This product is for in vitro research use only and is not intended for use in humans or animals.