

CRMP-2 (Phospho-Thr514) Polyclonal Antibody

Catalog No: #12368

Package Size: #12368-1 50ul #12368-2 100ul

Orders: order@signalwayantibody.comSupport: tech@signalwayantibody.com

Description

Product Name	CRMP-2 (Phospho-Thr514) Polyclonal Antibody
Host Species	Rabbit
Clonality	Polyclonal
Purification	The antibody was affinity-purified from rabbit antiserum by affinity-chromatography using epitope-specific immunogen.
Applications	WB IHC IF ELISA
Species Reactivity	Human;Mouse;Rat
Specificity	Phospho-CRMP-2 (T514) Polyclonal Antibody detects endogenous levels of CRMP-2 protein only when phosphorylated at T514.
Immunogen Type	peptide
Immunogen Description	Synthesized peptide derived from human CRMP-2 around the phosphorylation site of T514.
Conjugates	Unconjugated
Target Name	CRMP-2
Modification	Phospho
Other Names	DPYSL2; CRMP2; ULIP2; Dihydropyrimidinase-related protein 2; DRP-2; Collapsin response mediator protein 2; CRMP-2; N2A3; Unc-33-like phosphoprotein 2; ULIP-2
Accession No.	Swiss-Prot: Q16555NCBI Gene ID: 1808
Target Species	human
SDS-PAGE MW	65kd
Concentration	1mg/ml
Formulation	Liquid in PBS containing 50% glycerol, 0.5% BSA and 0.02% sodium azide.
Storage	Store at -20°C/1 year

Application Details

Western blotting: 1/500 - 1/2000

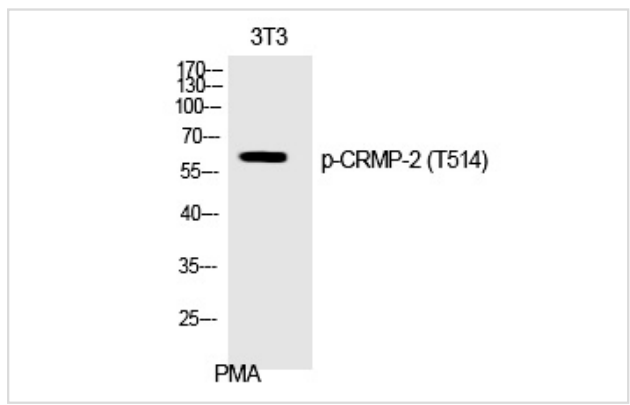
Immunohistochemistry: 1/100 - 1/300

Immunofluorescence: 1/200 - 1/1000

ELISA: 1/5000

Not yet tested in other applications

Images



Western Blot analysis of 3T3 cells using Phospho-CRMP-2 (T514) Polyclonal Antibody

Note: This product is for in vitro research use only and is not intended for use in humans or animals.