

# PDGFR- $\beta$ (Phospho-Tyr1021) Polyclonal Antibody

Catalog No: #12374

Package Size: #12374-1 50ul #12374-2 100ul

Orders: [order@signalwayantibody.com](mailto:order@signalwayantibody.com)Support: [tech@signalwayantibody.com](mailto:tech@signalwayantibody.com)

## Description

Product Name	PDGFR- $\beta$ (Phospho-Tyr1021) Polyclonal Antibody
Host Species	Rabbit
Clonality	Polyclonal
Isotype	IgG
Purification	The antibody was affinity-purified from rabbit antiserum by affinity-chromatography using epitope-specific immunogen.
Applications	WB IHC ELISA
Species Reactivity	Human;Mouse;Rat
Specificity	Phospho-PDGFR- $\beta$ (Y1021) Polyclonal Antibody detects endogenous levels of PDGFR- $\beta$ protein only when phosphorylated at Y1021.
Immunogen Type	peptide
Immunogen Description	Synthesized peptide derived from human PDGFR- $\beta$ around the phosphorylation site of Y1021.
Conjugates	Unconjugated
Target Name	PDGFR- $\beta$
Modification	Phospho
Other Names	PDGFRB; PDGFR; PDGFR1; Platelet-derived growth factor receptor beta; PDGF-R-beta; PDGFR-beta; Beta platelet-derived growth factor receptor; Beta-type platelet-derived growth factor receptor; CD140 antigen-like family member B; Platelet-deri
Accession No.	Swiss-Prot: P09619NCBI Gene ID: 5159
Target Species	human
Concentration	1mg/ml
Formulation	Liquid in PBS containing 50% glycerol, 0.5% BSA and 0.02% sodium azide.
Storage	Store at -20°C/1 year

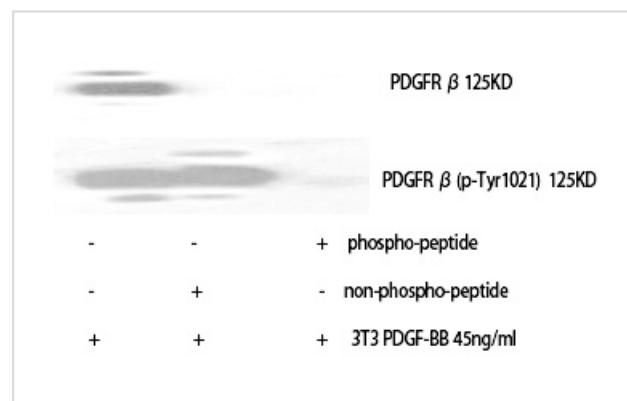
## Application Details

Western Blot: 1:500-2000

Immunohistochemistry: 1/100 - 1/300

ELISA: 1/5000

## Images



Western Blot analysis of NIH-3T3+PDGF cells using Phospho-PDGFR-β (Y1021) Polyclonal Antibody

Note: This product is for in vitro research use only and is not intended for use in humans or animals.