

# c-Jun (Phospho-Ser249) Antibody

Catalog No: #12428

Package Size: #12428-1 50ul #12428-2 100ul

Orders: [order@signalwayantibody.com](mailto:order@signalwayantibody.com)Support: [tech@signalwayantibody.com](mailto:tech@signalwayantibody.com)

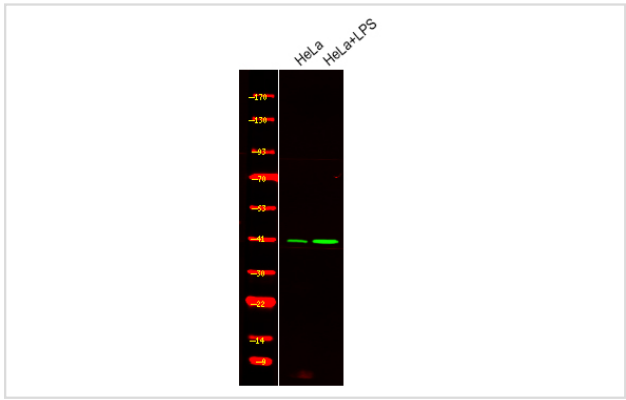
## Description

Product Name	c-Jun (Phospho-Ser249) Antibody
Host Species	Rabbit
Clonality	Polyclonal
Purification	Antibodies were produced by immunizing rabbits with synthetic phosphopeptide and KLH conjugates. Antibodies were purified by affinity-chromatography using epitope-specific phosphopeptide. Non-phospho specific antibodies were removed by chromatography using non-phosphopeptide.
Applications	WB
Species Reactivity	Human;Mouse;Rat
Specificity	c-Jun (Phospho-Ser249) Antibody detects endogenous levels of c-Jun only when phosphorylated at Ser249
Immunogen Type	Peptide
Immunogen Description	A synthesized peptide derived from human c-Jun (Phospho-Ser249)
Conjugates	Unconjugated
Target Name	c-Jun
Modification	Phospho
Other Names	JUN, Activator protein 1, AP-1, C-Jun, Jun proto-oncogene, p39, Jun oncogene, Proto-oncogene c-Jun, AP1, Enhancer-binding protein AP1, G0s7, Transcription factor AP-1, v-jun
Accession No.	Swiss-Prot#: P05412NCBI Gene ID: 3725
Target Species	human
Calculated MW	48kd
Concentration	1.0mg/ml
Formulation	Rabbit IgG in phosphate buffered saline (without Mg2+ and Ca2+), pH 7.4, 150mM NaCl, 0.02% sodium azide and 50% glycerol.
Storage	Store at -20°C

## Application Details

Western blotting: 1:1000

## Images



Western Blot analysis of lysates of HeLa and HeLa treated with LPS, using primary antibody at 1:1000 dilution.

Note: This product is for in vitro research use only and is not intended for use in humans or animals.