

Smad2 (Phospho-Ser245) Antibody

Catalog No: #12437

Package Size: #12437-1 50ul #12437-2 100ul

Orders: order@signalwayantibody.comSupport: tech@signalwayantibody.com

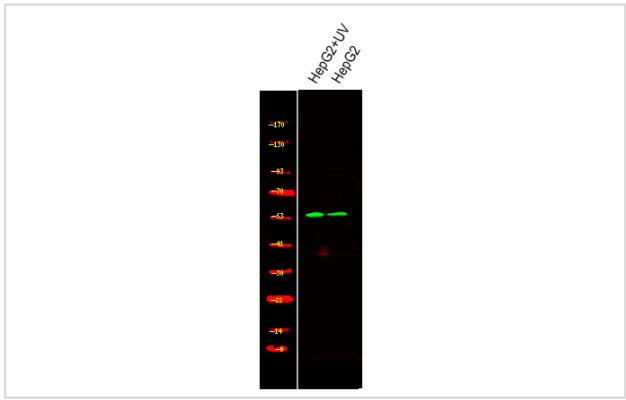
Description

Product Name	Smad2 (Phospho-Ser245) Antibody
Host Species	Rabbit
Clonality	Polyclonal
Isotype	IgG
Purification	Antibodies were produced by immunizing rabbits with synthetic phosphopeptide and KLH conjugates. Antibodies were purified by affinity-chromatography using epitope-specific phosphopeptide. Non-phospho specific antibodies were removed by chromatography using non-phosphopeptide.
Applications	WB
Species Reactivity	Human;Mouse;Rat
Specificity	Smad2 (Phospho-Ser245) Antibody detects endogenous levels of Smad2 only when phosphorylated at Ser245
Immunogen Type	Peptide
Immunogen Description	A synthesized peptide derived from human Smad2 (Phospho-Ser245)
Conjugates	Unconjugated
Target Name	Smad2
Modification	Phospho
Other Names	SMAD2, HMAD-2, HSMAD2, JV18-1, Mad protein homolog smad2, MADR2, MADH2, SMAD 2, MAD homolog 2, Mad-related protein 2, JV18, Mother against DPP homolog 2, Mothers against DPP homolog 2, Sma- and Mad-related protein 2, SMAD family member 2
Accession No.	Swiss-Prot#: Q15796NCBI Gene ID: 4087
Target Species	human
Calculated MW	58kd
Concentration	1.0mg/ml
Formulation	Rabbit IgG in phosphate buffered saline (without Mg2+ and Ca2+), pH 7.4, 150mM NaCl, 0.02% sodium azide and 50% glycerol.
Storage	Store at -20°C

Application Details

Western blotting: 1:1000

Images



Western Blot analysis of lysates of HepG2 cell UV treated and HepG2 cell, using primary antibody at 1:1000 dilution.

Note: This product is for in vitro research use only and is not intended for use in humans or animals.