

Hic-5 (Phospho-Tyr60) Antibody

Catalog No: #12441

Package Size: #12441-1 50ul #12441-2 100ul

Orders: order@signalwayantibody.comSupport: tech@signalwayantibody.com

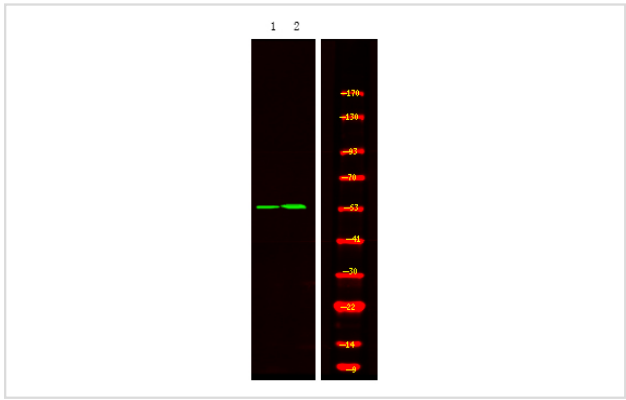
Description

Product Name	Hic-5 (Phospho-Tyr60) Antibody
Host Species	Rabbit
Clonality	Polyclonal
Isotype	IgG
Purification	Antibodies were produced by immunizing rabbits with synthetic phosphopeptide and KLH conjugates. Antibodies were purified by affinity-chromatography using epitope-specific phosphopeptide. Non-phospho specific antibodies were removed by chromatography using non-phosphopeptide.
Applications	WB
Species Reactivity	Human;Mouse;Rat
Specificity	Hic-5 (Phospho-Tyr60) Antibody detects endogenous levels of Hic-5 only when phosphorylated at Tyr60
Immunogen Type	Peptide
Immunogen Description	A synthesized peptide derived from human Hic-5 (Phospho-Tyr60)
Conjugates	Unconjugated
Target Name	Hic-5
Modification	Phospho
Other Names	TGFB1I1, ARA55, HIC5, HIC-5, TSC-5
Accession No.	Swiss-Prot#: O43294NCBI Gene ID: 7041
Target Species	human
Calculated MW	49kd
Concentration	1.0mg/ml
Formulation	Rabbit IgG in phosphate buffered saline (without Mg2+ and Ca2+), pH 7.4, 150mM NaCl, 0.02% sodium azide and 50% glycerol.
Storage	Store at -20°C

Application Details

Western blotting: 1:1000

Images



Western Blot analysis of lysates of 1. A431 cell and 2. A431 cell treated with 100ng/mL LPS for 30min, using primary antibody at 1:1000 dilution.

Note: This product is for in vitro research use only and is not intended for use in humans or animals.