

## eNOS (Phospho-Ser114) Antibody

Catalog No: #12472



Package Size: #12472-1 50ul #12472-2 100ul

Orders: [order@signalwayantibody.com](mailto:order@signalwayantibody.com)Support: [tech@signalwayantibody.com](mailto:tech@signalwayantibody.com)

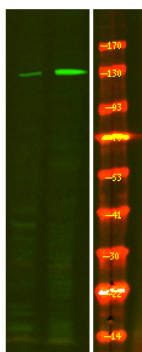
## Description

|                       |   |
|-----------------------|---|
| Product Name          | eNOS (Phospho-Ser114) Antibody  |
| Host Species          | Rabbit  |
| Clonality             | Polyclonal  |
| Isotype               | IgG   |
| Purification          | Antibodies were produced by immunizing rabbits with synthetic phosphopeptide and KLH conjugates.<br>Antibodies were purified by affinity-chromatography using epitope-specific phosphopeptide. Non-phospho specific antibodies were removed by chromatography using non-phosphopeptide. |
| Applications          | WB  |
| Species Reactivity    | Human   |
| Specificity           | eNOS (Phospho-Ser114) Antibody detects endogenous levels of eNOS only when phosphorylated at Ser114   |
| Immunogen Type        | Peptide   |
| Immunogen Description | A synthesized peptide derived from human eNOS (Phospho-Ser114)  |
| Conjugates            | Unconjugated  |
| Target Name           | eNOS  |
| Modification          | Phospho   |
| Other Names           | NOS3, Constitutive NOS, CNOS, Endothelial NOS, ECNOS, NOS type III, NOSIII, EC-NOS, ENOS, Nitric oxide synthase 3   |
| Accession No.         | Swiss-Prot#: P29474NCBI Gene ID: 4846   |
| Target Species        | human   |
| Calculated MW         | 140kd   |
| Concentration         | 1.0mg/ml  |
| Formulation           | Rabbit IgG in phosphate buffered saline (without Mg2+ and Ca2+), pH 7.4, 150mM NaCl, 0.02% sodium azide and 50% glycerol.   |
| Storage               | Store at -20°C  |

## Application Details

Western blotting: 1:1000

## Images



Western Blot analysis of lysates of HEK-293 cell (Left) and HEK-293 cell treated with 100ng/mL LPS for 30min (Right), using primary antibody at 1:1000 dilution.

Note: This product is for in vitro research use only and is not intended for use in humans or animals.