

MOK (Phospho-Tyr161) Antibody

Catalog No: #12518

Package Size: #12518-1 50ul #12518-2 100ul

Orders: order@signalwayantibody.comSupport: tech@signalwayantibody.com

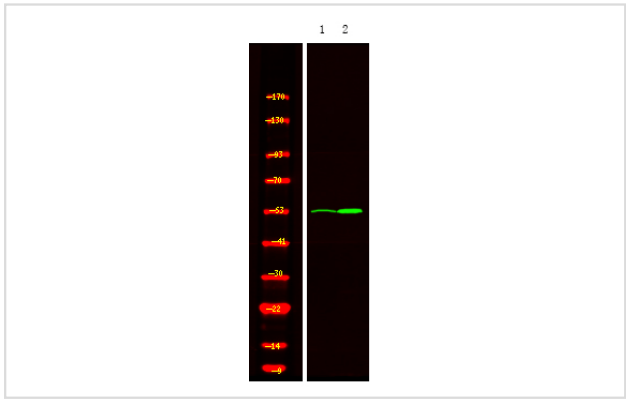
Description

Product Name	MOK (Phospho-Tyr161) Antibody
Host Species	Rabbit
Clonality	Polyclonal
Isotype	IgG
Purification	Antibodies were produced by immunizing rabbits with synthetic phosphopeptide and KLH conjugates. Antibodies were purified by affinity-chromatography using epitope-specific phosphopeptide. Non-phospho specific antibodies were removed by chromatography using non-phosphopeptide.
Applications	WB
Species Reactivity	Human;Mouse;Rat
Specificity	MOK (Phospho-Tyr161) Antibody detects endogenous levels of MOK only when phosphorylated at Tyr161
Immunogen Type	Peptide
Immunogen Description	A synthesized peptide derived from human MOK (Phospho-Tyr161)
Conjugates	Unconjugated
Target Name	MOK
Modification	Phospho
Other Names	MOK, MOK kinase, MOK protein kinase, RAGE, RAGE1, RAGE-1, Renal tumor antigen 1, Renal tumor antigen
Accession No.	Swiss-Prot#: Q9UQ07NCBI Gene ID: 5891
Target Species	human
Calculated MW	48kd
Concentration	1.0mg/ml
Formulation	Rabbit IgG in phosphate buffered saline (without Mg2+ and Ca2+), pH 7.4, 150mM NaCl, 0.02% sodium azide and 50% glycerol.
Storage	Store at -20°C

Application Details

Western blotting: 1:1000

Images



Western Blot analysis of lysates of 1. Hela cell and 2. Hela cell treated with 100ng/mL LPS for 30min, using primary antibody at 1:1000 dilution.

Published Papers

el at., Extracellular TDP-43 aggregates target MAPK/MAK/MRK overlapping kinase (MOK) and trigger caspase-3/IL-18 signaling in microglia.In FASEB J on 2017 Jul by Mari a M Leal-Lasarte, Jaime M Franco,et al..PMID: 28336525, , (2017)
[PMID:28336525](#)

Note: This product is for in vitro research use only and is not intended for use in humans or animals.