

PDGFRb (Phospho-Tyr579+Tyr581) Antibody

Catalog No: #12527

Package Size: #12527-1 50ul #12527-2 100ul

Orders: order@signalwayantibody.comSupport: tech@signalwayantibody.com

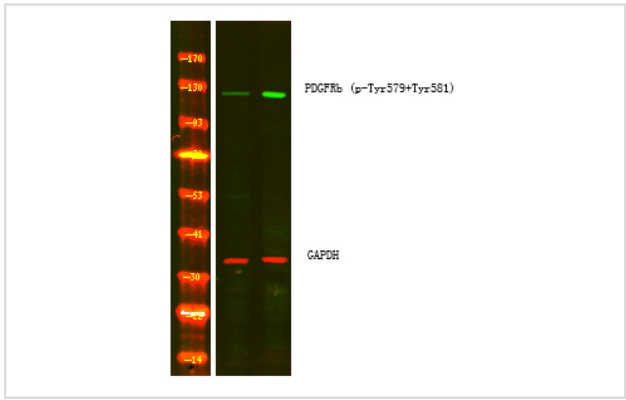
Description

Product Name	PDGFRb (Phospho-Tyr579+Tyr581) Antibody
Host Species	Rabbit
Clonality	Polyclonal
Isotype	IgG
Purification	Antibodies were produced by immunizing rabbits with synthetic phosphopeptide and KLH conjugates. Antibodies were purified by affinity-chromatography using epitope-specific phosphopeptide. Non-phospho specific antibodies were removed by chromatography using non-phosphopeptide.
Applications	WB
Species Reactivity	Human;Mouse;Rat
Specificity	PDGFRb (Phospho-Tyr579+Tyr581) Antibody detects endogenous levels of PDGFRb only when phosphorylated at Tyr579+Tyr581
Immunogen Type	Peptide
Immunogen Description	A synthesized peptide derived from human PDGFRb (Phospho-Tyr579+Tyr581)
Conjugates	Unconjugated
Target Name	PDGFRb
Modification	Phospho
Other Names	PDGFRB, CD140B, Beta pdgfr, Beta type PDGFR, BPDGFR, CD140b antigen, IBGC4, JTK12, PDGF-beta R, PDGF-R-beta, PDGFR, PDGFRbeta, PDGF receptor beta, PDGF-R, PDGFbetaR, PDGFR Beta, PDGFR-1, PDGFR-beta, BetaPDGFR, Pdgf beta-receptor, PDGFR1, PDGFRB/CEV14 ...
Accession No.	Swiss-Prot#: P09619NCBI Gene ID: 5159
Target Species	human
Calculated MW	170kd
Concentration	1.0mg/ml
Formulation	Rabbit IgG in phosphate buffered saline (without Mg2+ and Ca2+), pH 7.4, 150mM NaCl, 0.02% sodium azide and 50% glycerol.
Storage	Store at -20°C

Application Details

Western blotting: 1:1000

Images



Note: This product is for in vitro research use only and is not intended for use in humans or animals.