

PKG2 (Phospho-Ser126) Antibody

Catalog No: #12529



Package Size: #12529-1 50ul #12529-2 100ul

Orders: order@signalwayantibody.com

Support: tech@signalwayantibody.com

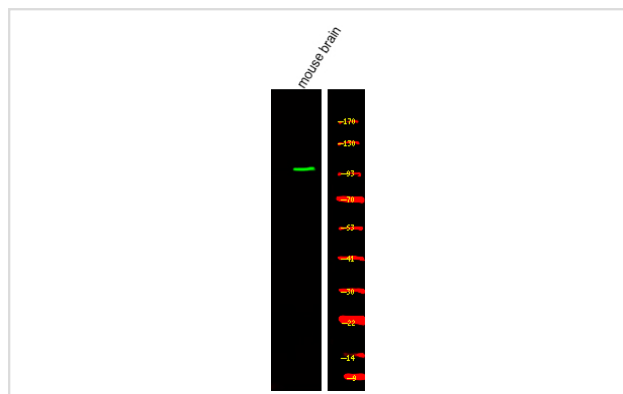
Description

| | |
|-----------------------|---|
| Product Name | PKG2 (Phospho-Ser126) Antibody |
| Host Species | Rabbit |
| Clonality | Polyclonal |
| Purification | Antibodies were produced by immunizing rabbits with synthetic phosphopeptide and KLH conjugates. Antibodies were purified by affinity-chromatography using epitope-specific phosphopeptide. Non-phospho specific antibodies were removed by chromatography using non-phosphopeptide. |
| Applications | WB |
| Species Reactivity | Human;Mouse;Rat |
| Specificity | PKG2 (Phospho-Ser126) Antibody detects endogenous levels of PKG2 only when phosphorylated at Ser126 |
| Immunogen Type | Peptide |
| Immunogen Description | A synthesized peptide derived from human PKG2 (Phospho-Ser126) |
| Conjugates | Unconjugated |
| Target Name | PKG2 |
| Modification | Phospho |
| Other Names | PRKG2, CGK 2, CGMP protein kinase II, CGKII, CGMP-PK type II, PKGII, PRKGR2, CGK2, CGMP kinase II |
| Accession No. | Swiss-Prot#: Q13237NCBI Gene ID: 5593 |
| Target Species | human |
| Calculated MW | 87kd |
| Concentration | 1.0mg/ml |
| Formulation | Rabbit IgG in phosphate buffered saline (without Mg ²⁺ and Ca ²⁺), pH 7.4, 150mM NaCl, 0.02% sodium azide and 50% glycerol. |
| Storage | Store at -20°C |

Application Details

Western blotting: 1:1000

Images



Western Blot analysis of lysates of mouse brain, using primary antibody at 1:1000 dilution.

Note: This product is for in vitro research use only and is not intended for use in humans or animals.