

RSK3 (Phospho-Ser360) Antibody

Catalog No: #12532

Package Size: #12532-1 50ul #12532-2 100ul

Orders: order@signalwayantibody.comSupport: tech@signalwayantibody.com

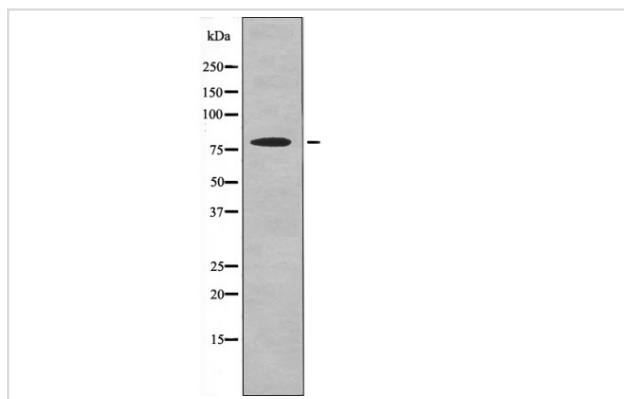
Description

| | |
|-----------------------|---|
| Product Name | RSK3 (Phospho-Ser360) Antibody |
| Host Species | Rabbit |
| Clonality | Polyclonal |
| Isotype | IgG |
| Purification | Antibodies were produced by immunizing rabbits with synthetic phosphopeptide and KLH conjugates. Antibodies were purified by affinity-chromatography using epitope-specific phosphopeptide. Non-phospho specific antibodies were removed by chromatography using non-phosphopeptide. |
| Applications | WB |
| Species Reactivity | Human;Mouse |
| Specificity | RSK3 (Phospho-Ser360) Antibody detects endogenous levels of RSK3 only when phosphorylated at Ser360 |
| Immunogen Type | Peptide |
| Immunogen Description | A synthesized peptide derived from human RSK3 (Phospho-Ser360) |
| Conjugates | Unconjugated |
| Target Name | RSK3 |
| Modification | Phospho |
| Other Names | RPS6KA2, HU-2, MAPKAPK-1c, MAPKAPK1C, p90 ribosomal s6 kinase 3, p90RSK2, Pp90RSK3, Ribosomal S6 kinase 3, RSK-3, S6K-alpha, p90-RSK3, RSK, RSK3, S6K-alpha-2, S6K-alpha2, MAPKAP kinase 1c, p90-RSK 2 |
| Accession No. | Swiss-Prot#: Q15349NCBI Gene ID: 6196 |
| Target Species | human |
| Calculated MW | 83kd |
| Concentration | 1.0mg/ml |
| Formulation | Rabbit IgG in phosphate buffered saline (without Mg ²⁺ and Ca ²⁺), pH 7.4, 150mM NaCl, 0.02% sodium azide and 50% glycerol. |
| Storage | Store at -20°C |

Application Details

Western blotting: 1:1000

Images



Western blot analysis RSK3 (Phospho-Ser360) using EGF treated Jurkat whole cell lysates

Note: This product is for in vitro research use only and is not intended for use in humans or animals.