

SP1 (Phospho-Thr278) Antibody

Catalog No: #12638

Package Size: #12638-1 50ul #12638-2 100ul

Orders: order@signalwayantibody.comSupport: tech@signalwayantibody.com

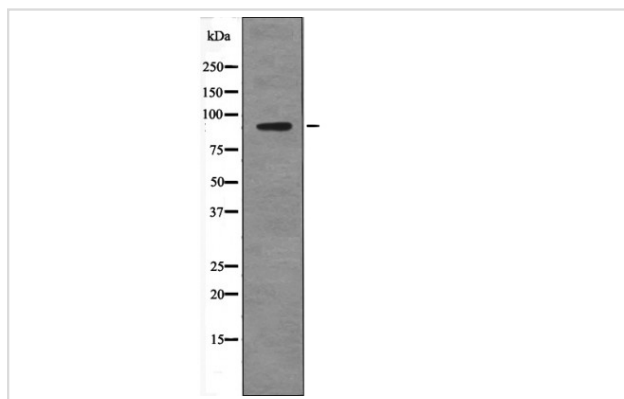
Description

Product Name	SP1 (Phospho-Thr278) Antibody
Host Species	Rabbit
Clonality	Polyclonal
Isotype	IgG
Purification	Antibodies were produced by immunizing rabbits with synthetic phosphopeptide and KLH conjugates. Antibodies were purified by affinity-chromatography using epitope-specific phosphopeptide. Non-phospho specific antibodies were removed by chromatography using non-phosphopeptide.
Applications	WB
Species Reactivity	Human;Mouse;Rat
Specificity	SP1 (Phospho-Thr278) Antibody detects endogenous levels of SP1 only when phosphorylated at Thr278
Immunogen Type	Peptide
Immunogen Description	A synthesized peptide derived from human SP1 (Phospho-Thr278)
Conjugates	Unconjugated
Target Name	SP1
Modification	Phospho
Other Names	SP1, Sp1 transcription factor, Transcription factor Sp1, Specificity protein 1, TSFP1
Accession No.	Swiss-Prot#: P08047NCBI Gene ID: 6667
Target Species	human
Calculated MW	90kd
Concentration	1.0mg/ml
Formulation	Rabbit IgG in phosphate buffered saline (without Mg ²⁺ and Ca ²⁺), pH 7.4, 150mM NaCl, 0.02% sodium azide and 50% glycerol.
Storage	Store at -20°C

Application Details

Western blotting: 1:1000

Images



Western blot analysis SP1 (Phospho-Thr278) using UV treated HeLa whole cell lysates

Note: This product is for in vitro research use only and is not intended for use in humans or animals.