

# USF1 (Phospho-Thr153) Antibody

Catalog No: #12651

Package Size: #12651-1 50ul #12651-2 100ul

Orders: [order@signalwayantibody.com](mailto:order@signalwayantibody.com)Support: [tech@signalwayantibody.com](mailto:tech@signalwayantibody.com)

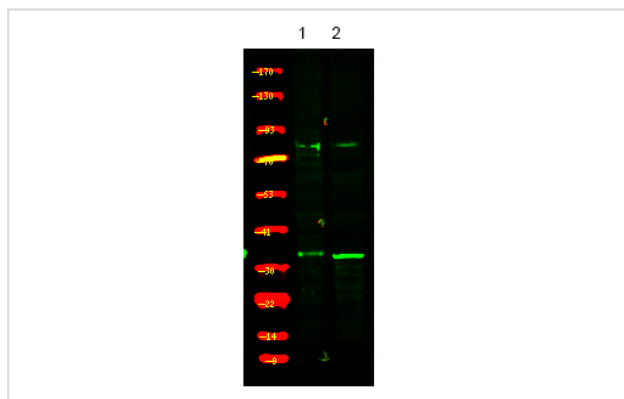
## Description

Product Name	USF1 (Phospho-Thr153) Antibody
Host Species	Rabbit
Clonality	Polyclonal
Isotype	IgG
Purification	Antibodies were produced by immunizing rabbits with synthetic phosphopeptide and KLH conjugates. Antibodies were purified by affinity-chromatography using epitope-specific phosphopeptide. Non-phospho specific antibodies were removed by chromatography using non-phosphopeptide.
Applications	WB
Species Reactivity	Human;Mouse;Rat
Specificity	USF1 (Phospho-Thr153) Antibody detects endogenous levels of USF1 only when phosphorylated at Thr153
Immunogen Type	Peptide
Immunogen Description	A synthesized peptide derived from human USF1 (Phospho-Thr153)
Conjugates	Unconjugated
Target Name	USF1
Modification	Phospho
Other Names	USF1, BHLHb11, FCHL, FCHL1, MLTFI, USF, UEF, HYPLIP1, MLTF, Upstream stimulatory factor 1
Accession No.	Swiss-Prot#: P22415NCBI Gene ID: 7391
Target Species	human
Calculated MW	34kd
Concentration	1.0mg/ml
Formulation	Rabbit IgG in phosphate buffered saline (without Mg <sup>2+</sup> and Ca <sup>2+</sup> ), pH 7.4, 150mM NaCl, 0.02% sodium azide and 50% glycerol.
Storage	Store at -20°C

## Application Details

Western blotting: 1:1000

## Images



Western Blot analysis of lysates of 1. Hela cell and 2. Hela cell treated with 100ng/mL LPS for 30min, using primary antibody at 1:1000 dilution.

## Published Papers

el at., Phosphorylation of E-box binding USF-1 by PI3K/AKT enhances its transcriptional activation of the WBP2 oncogene in breast cancer cells.In FASEB J. On 2018 Sep 5 by Ramos A, Miow QH et al..PMID: 30183375 , , (2018)

[PMID:30183375](#)

Note: This product is for in vitro research use only and is not intended for use in humans or animals.