

HER4 (Phospho-Tyr1242) Antibody

Catalog No: #12727

Package Size: #12727-1 50ul #12727-2 100ul

Orders: order@signalwayantibody.comSupport: tech@signalwayantibody.com

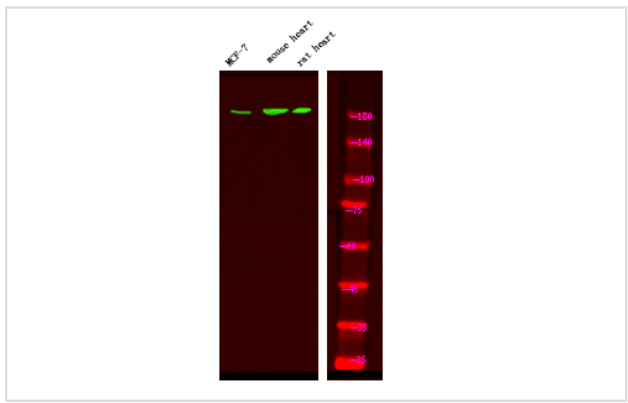
Description

Product Name	HER4 (Phospho-Tyr1242) Antibody
Host Species	Rabbit
Clonality	Polyclonal
Isotype	IgG
Purification	Antibodies were produced by immunizing rabbits with synthetic phosphopeptide and KLH conjugates. Antibodies were purified by affinity-chromatography using epitope-specific phosphopeptide. Non-phospho specific antibodies were removed by chromatography using non-phosphopeptide.
Applications	WB
Species Reactivity	Human;Mouse;Rat
Specificity	HER4 (Phospho-Tyr1242) Antibody detects endogenous levels of HER4 only when phosphorylated at Tyr1242
Immunogen Type	Peptide
Immunogen Description	A synthesized peptide derived from human HER4 (Phospho-Tyr1242)
Conjugates	Unconjugated
Target Name	HER4
Modification	Phospho
Other Names	ERBB4, ERBB 4, HER4, p180 erb4, p180erbB4
Accession No.	Swiss-Prot#: Q15303NCBI Gene ID: 2066
Target Species	human
Calculated MW	180kd
Concentration	1.0mg/ml
Formulation	Rabbit IgG in phosphate buffered saline (without Mg ²⁺ and Ca ²⁺), pH 7.4, 150mM NaCl, 0.02% sodium azide and 50% glycerol.
Storage	Store at -20°C

Application Details

Western blotting: 1:1000

Images



Western Blot analysis of lysates of MCF-7 cell, mouse heart and rat heart, using primary antibody at 1:1000 dilution.

Published Papers

el at., Clozapine-dependent Inhibition of EGF/neuregulin receptor (ErbB) kinases. In Transl Psychiatry on 2019 Aug 1 by Kobayashi Y, Iwakura Y et al..PMID:31371697, , (2019)
[PMID:31371697](#)

Note: This product is for in vitro research use only and is not intended for use in humans or animals.