

MYPT1 (Phospho-Ser507) Antibody

Catalog No: #12732



Package Size: #12732-1 50ul #12732-2 100ul

Orders: order@signalwayantibody.comSupport: tech@signalwayantibody.com

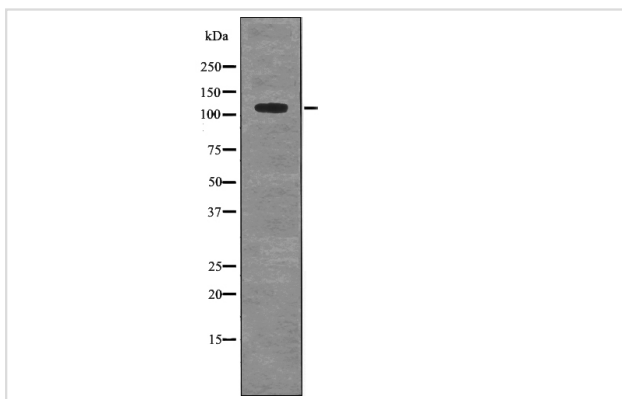
Description

Product Name	MYPT1 (Phospho-Ser507) Antibody
Host Species	Rabbit
Clonality	Polyclonal
Isotype	IgG
Purification	Antibodies were produced by immunizing rabbits with synthetic phosphopeptide and KLH conjugates. Antibodies were purified by affinity-chromatography using epitope-specific phosphopeptide. Non-phospho specific antibodies were removed by chromatography using non-phosphopeptide.
Applications	WB
Species Reactivity	Human;Mouse
Specificity	MYPT1 (Phospho-Ser507) Antibody detects endogenous levels of MYPT1 only when phosphorylated at Ser507
Immunogen Type	Peptide
Immunogen Description	A synthesized peptide derived from human MYPT1 (Phospho-Ser507)
Conjugates	Unconjugated
Target Name	MYPT1
Modification	Phospho
Other Names	PPP1R12A, M130, MYPT1, MBS, Myosin binding subunit
Accession No.	Swiss-Prot#: O14974NCBI Gene ID: 4659
Target Species	human
Calculated MW	115 kDa
SDS-PAGE MW	140 kDa
Concentration	1.0mg/ml
Formulation	Rabbit IgG in phosphate buffered saline (without Mg ²⁺ and Ca ²⁺), pH 7.4, 150mM NaCl, 0.02% sodium azide and 50% glycerol.
Storage	Store at -20°C

Application Details

Western blotting: 1:1000

Images



Western blot analysis MYPT1 (Phospho-Ser507) using Insulin treated 293 whole cell lysates

Published Papers

Yang Yuming, Tan Baohua, Xiao Liyao, Huang Huijun, Xu Weihua, Su Jiawei, Zhao Yaolu, Hong Linjun, Cai Gengyuan, Li Zicong, Dai Lihe, Gu Ting et al., GPCPD1 is regulated by METTL3/IGF2BP3 dependent m6A modification to affect pig muscle fiber type conversion, Gene, (2025)

[PMID:40404071](#)

Note: This product is for in vitro research use only and is not intended for use in humans or animals.