

## ROR1 (Phospho-Tyr786) Antibody

Catalog No: #12735



Package Size: #12735 100ul

Orders: [order@signalwayantibody.com](mailto:order@signalwayantibody.com)Support: [tech@signalwayantibody.com](mailto:tech@signalwayantibody.com)

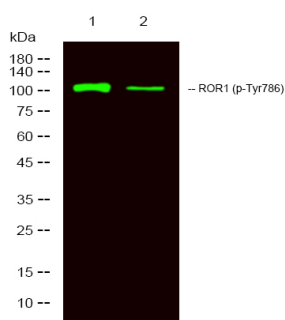
## Description

Product Name	ROR1 (Phospho-Tyr786) Antibody
Host Species	Rabbit
Clonality	Polyclonal
Isotype	IgG
Purification	Antibodies were produced by immunizing rabbits with synthetic phosphopeptide and KLH conjugates. Antibodies were purified by affinity-chromatography using epitope-specific phosphopeptide. Non-phospho specific antibodies were removed by chromatography using non-phosphopeptide.
Applications	WB
Species Reactivity	Human
Specificity	ROR1 (Phospho-Tyr786) Antibody detects endogenous levels of ROR1 only when phosphorylated at Tyr786
Immunogen Type	Peptide
Immunogen Description	A synthesized peptide derived from human ROR1 (Phospho-Tyr786)
Conjugates	Unconjugated
Target Name	ROR1
Modification	Phospho
Other Names	ROR1, DJ537F10.1, NTRKR1, Protein tyrosine kinase t-ror1
Accession No.	Swiss-Prot#: Q01973NCBI Gene ID: 4919
Target Species	human
Calculated MW	101kd
Concentration	1.0mg/ml
Formulation	Liquid in PBS containing 50% glycerol, 0.5% BSA and 0.02% sodium azide.
Storage	Store at -20°C

## Application Details

Western blotting: 1:1000

## Images



Western Blot analysis of lysates of 1. Hela and 2. Hela treated with 100ng/mL LPS for 20min, using primary antibody at 1:1000 dilution.

---

Note: This product is for in vitro research use only and is not intended for use in humans or animals.