

Phospho-Smad3(S425) Mouse Monoclonal Antibody(1D9)

Catalog No: #12838

Package Size: #12838-1 50ul #12838-2 100ul

Orders: order@signalwayantibody.comSupport: tech@signalwayantibody.com

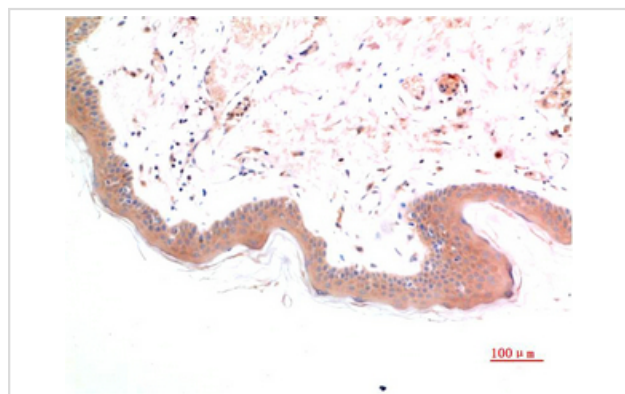
Description

Product Name	Phospho-Smad3(S425) Mouse Monoclonal Antibody(1D9)
Host Species	Mouse
Clonality	Monoclonal
Clone No.	1D9
Isotype	IgG1
Applications	IHC
Species Reactivity	Human;Mouse;Rat
Specificity	The antibody detects endogenous Phospho-Smad3(S425) protein
Immunogen Type	Peptide
Immunogen Description	Synthetic Peptide of Phospho-Smad3(S425)
Conjugates	Unconjugated
Target Name	Smad3
Modification	Phospho
Other Names	Mothers against decapentaplegic homolog 3 (MAD homolog 3) (Mad3) (Mothers against DPP homolog 3) (hMAD-3) (JV15-2) (SMAD family member 3) (SMAD 3) (Smad3) (hSMAD3)
Calculated MW	52kd
Concentration	1mg/ml
Formulation	Liquid in PBS containing 50% glycerol, 0.5% BSA and 0.02% sodium azide.
Storage	Store at -20°C/1 year

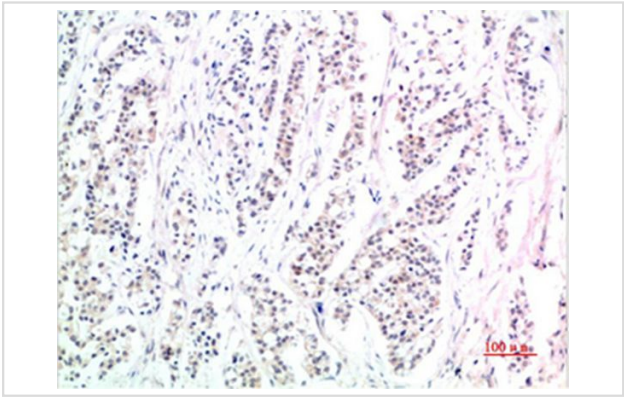
Application Details

Immunohistochemistry: 1:50-1:200

Images



Immunohistochemical analysis of paraffin-embedded Human Skin Tissue using Phospho-Smad3(S425)Mouse mAb diluted at 1:200



Immunohistochemical analysis of paraffin-embedded Human Stomach Carcinoma Tissue using Phospho-Smad3(S425) Mouse mAb diluted at 1:200

Published Papers

el at., Gastrodin attenuates renal injury and collagen deposition via suppression of the TGF-β1/Smad2/3 signaling pathway based on network pharmacology analysis InFront PharmacolOn2023 Jan 17byYing Wen , Xiuli Zhang et al..PMID:36733505, , (2023)

[PMID:36733505](#)

Note: This product is for in vitro research use only and is not intended for use in humans or animals.