

Ryanodine Receptor 2 (phospho-Ser2808) Antibody

Catalog No: #13306

Package Size: #13306 100ul

Orders: order@signalwayantibody.comSupport: tech@signalwayantibody.com

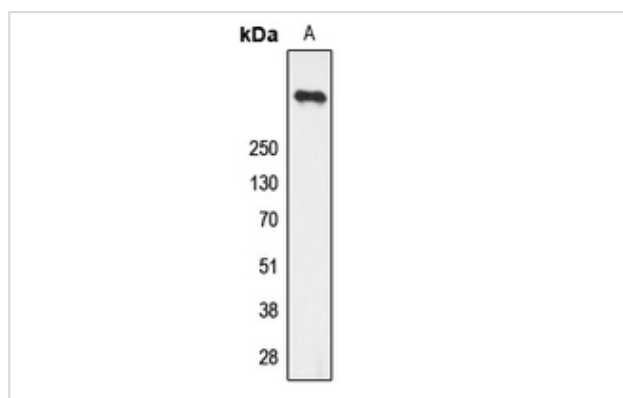
Description

Product Name	Ryanodine Receptor 2 (phospho-Ser2808) Antibody
Host Species	Rabbit
Clonality	Polyclonal
Purification	The antibody was purified by immunogen affinity chromatography.
Applications	WB IHC IF
Species Reactivity	Human;Mouse;Rat
Specificity	Recognizes endogenous levels of Ryanodine Receptor 2 (phospho-Ser2808) protein.
Immunogen Description	KLH-conjugated synthetic peptide encompassing a sequence within the center region of human Ryanodine Receptor 2.
Conjugates	Unconjugated
Target Name	RYR2
Other Names	Ryanodine receptor 2; RYR-2; RyR2; hRYR-2; Cardiac muscle ryanodine receptor; Cardiac muscle ryanodine receptor-calcium release channel; Type 2 ryanodine receptor
Accession No.	Swiss-Prot#:Q92736NCBI Gene ID:6262
Calculated MW	564KD
Concentration	1 mg/ml
Formulation	Rabbit IgG in phosphate buffered saline (without Mg ²⁺ and Ca ²⁺), pH 7.4, 150mM NaCl, 0.02% sodium azide and 50% glycerol.
Storage	Store at -20°C

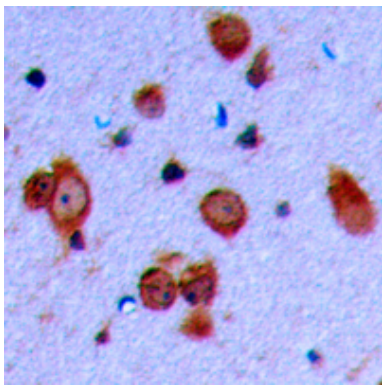
Application Details

Western blotting:1:500 - 1:1000Immunohistochemistry:1:50 - 1:100Immunofluorescence:1:100 - 1:300

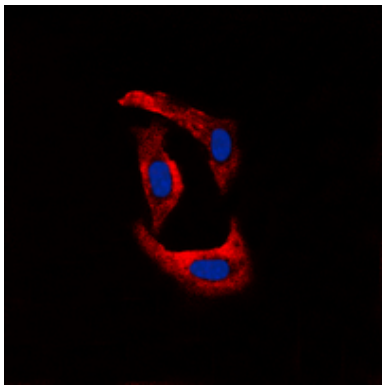
Images



Western blot analysis of Ryanodine Receptor 2 (phospho-Ser2808) expression in U251 whole cell lysates.



Immunohistochemical analysis of Ryanodine Receptor 2 (phospho-Ser2808) staining in human brain formalin fixed paraffin embedded tissue section. The section was then incubated with the antibody at room temperature and detected using an HRP conjugated compact polymer system. DAB was used as the chromogen. The section was then counterstained with haematoxylin and mounted with DPX.



Immunofluorescent analysis of Ryanodine Receptor 2 (phospho-Ser2808) staining in U251 cells. Formalin-fixed cells were permeabilized with 0.1% Triton X-100 in TBS for 5-10 minutes and blocked with 3% BSA-PBS for 30 minutes at room temperature. Cells were probed with the primary antibody in 3% BSA-PBS and incubated overnight at 4 C in a humidified chamber. Cells were washed with PBST and incubated with a DyLight 594-conjugated secondary antibody (red) in PBS at room temperature in the dark. DAPI was used to stain the cell nuclei (blue).

Note: This product is for in vitro research use only and is not intended for use in humans or animals.