

Smad5 (Phospho-Ser463/Ser465) Rabbit mAb

Catalog No: #14137



Package Size: #14137-1 50ul #14137-2 100ul

Orders: order@signalwayantibody.com

Support: tech@signalwayantibody.com

Description

Product Name	Smad5 (Phospho-Ser463/Ser465) Rabbit mAb
Host Species	Recombinant Rabbit
Clonality	Monoclonal
Isotype	Rabbit IgG
Purification	Affinity-chromatography
Applications	WB;ICC/IF;IHC
Species Reactivity	Human;Mouse;Rat
Specificity	Phospho-Smad5 (S463/465) Antibody detects endogenous levels of total Phospho-Smad5 (S463/465)
Immunogen Description	A synthesized peptide derived from human Phospho-Smad5 (S463/465)
Conjugates	Unconjugated
Other Names	hSmad5; JV5-1 ; MADH5; SMAD5; MusMLP ;SMAD family member 5;
Accession No.	Uniprot:Q99717
Calculated MW	52 kDa
SDS-PAGE MW	58 kDa
Formulation	Rabbit IgG in phosphate buffered saline , pH 7.4, 150mM NaCl, 0.02% sodium azide and 50% glycerol.
Storage	Store at +4°C short term. Store at -20°C long term. Avoid freeze / thaw cycle.

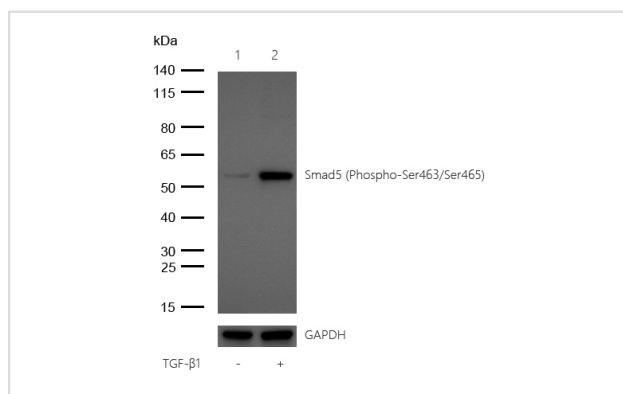
Application Details

WB: 1:500-1:2000

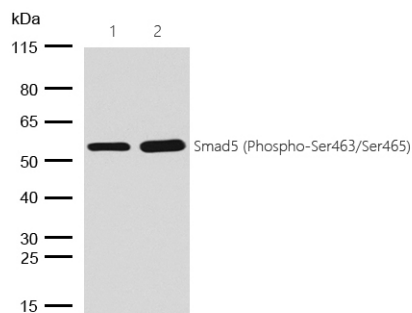
ICC/IF: 1:50-1:200

IHC: 1:50-1:200

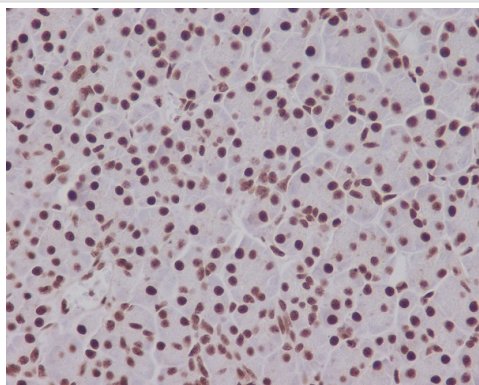
Images



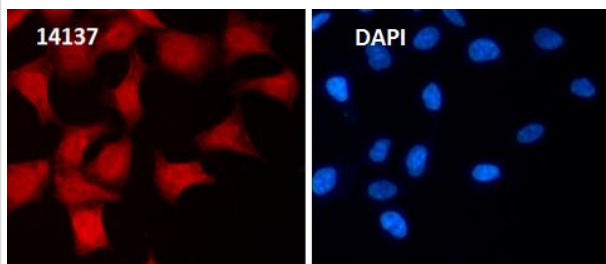
All lanes :Smad5 (Phospho-Ser463/Ser465) Rabbit mAb at 1/1k dilution
 Lane 1 : HepG2 whole cell lysates
 Lane 2 : HepG2 treated with 20 ng/mL TGFβ1 for 15 minutes whole cell lysates
 Lysates/proteins at 20 µg per lane.
 Secondary All lanes : Goat Anti-Rabbit IgG H&L (HRP) at 1/20000 dilution
 Predicted band size: 52 kDa
 Observed band size: 58 kDa
 Exposure time: 5 seconds



All lanes :Smad5 (Phospho-Ser463/Ser465) Rabbit mAb at 1/1k dilution
 Lane 1 : Mouse Brain lysates
 Lane 2 : Rat Brain lysates
 Lysates/proteins at 20 µg per lane.
 SecondaryAll lanes : Goat Anti-Rabbit IgG H&L (HRP) at 1/20000 dilution
 Predicted band size: 52 kDa Observed band size: 58 kDa
 Exposure time: 4 seconds



Formalin-fixed;paraffin-embedded human pancreas tissue stained for Smad5 (Phospho-Ser463/Ser465) using 14137 at 1/100 dilution in immunohistochemical analysis.



Immunocytochemistry/ Immunofluorescence Smad5 (Phospho-Ser463/Ser465) antibody (14137)
 ICC/IF staining of (Phospho-Ser463/Ser465) in 293T cells. Cells were fixed with 4% Paraformaldehyde permeabilized with 0.1% Triton X-100.
 Samples were incubated with 14137 at a working dilution of 1/100. The secondary antibody was Alexa FluorB 647 goat anti rabbit;used at a dilution of 1/500.
 Nuclei were counterstained with DAPI.

Product Description

Transcriptional modulator activated by BMP (bone morphogenetic proteins) type 1 receptor kinase. SMAD5 is a receptor-regulated SMAD (R-SMAD). SMAD5 is required for normal development of the cardiovascular system in vivo; lack of the SMAD5 gene results in apoptosis of cardiac myocytes.

Note: This product is for in vitro research use only and is not intended for use in humans or animals.