

STAT3 (Phospho-Ser727) Rabbit mAb

Catalog No: #14152



Package Size: #14152-1 50ul #14152-2 100ul

Orders: [order@signalwayantibody.com](mailto:order@signalwayantibody.com)  
Support: [tech@signalwayantibody.com](mailto:tech@signalwayantibody.com)

Description

Product Name	STAT3 (Phospho-Ser727) Rabbit mAb
Host Species	Recombinant Rabbit
Clonality	Monoclonal
Isotype	Rabbit IgG
Purification	Affinity-chromatography
Applications	WB;ICC/IF;IHC
Species Reactivity	Human;Mouse;Rat
Specificity	Phospho-STAT3 (S727) Antibody detects endogenous levels of total Phospho-STAT3 (S727)
Immunogen Description	A synthesized peptide derived from human Phospho-STAT3 (S727)
Conjugates	Unconjugated
Other Names	APRF;Acute-phase response factor;Signal transducer and activator of transcription 3;Stat3;
Accession No.	Uniprot:P40763
Calculated MW	88 kDa
SDS-PAGE MW	98 kDa
Formulation	Rabbit IgG in phosphate buffered saline , pH 7.4, 150mM NaCl, 0.02% sodium azide and 50% glycerol.
Storage	Store at +4°C short term. Store at -20°C long term. Avoid freeze / thaw cycle.

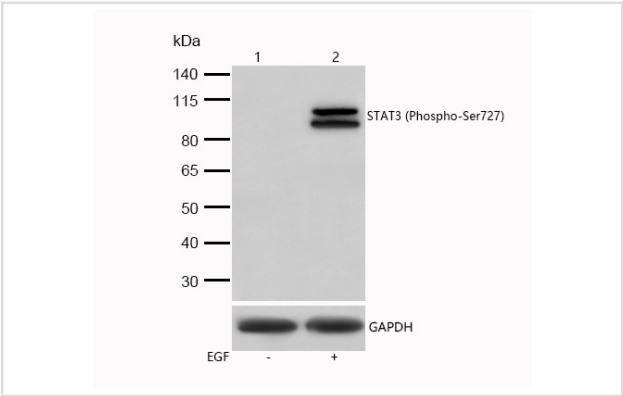
Application Details

WB: 1:500-1:2000

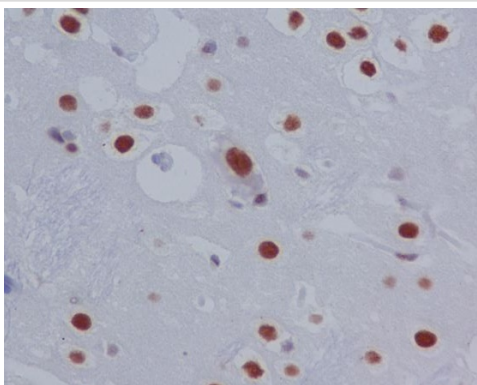
ICC/IF: 1:50-1:200

IHC: 1:50-1:200

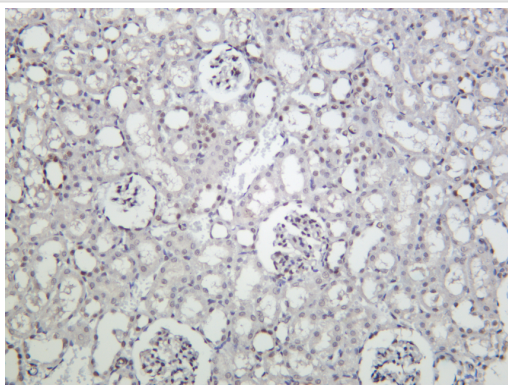
Images



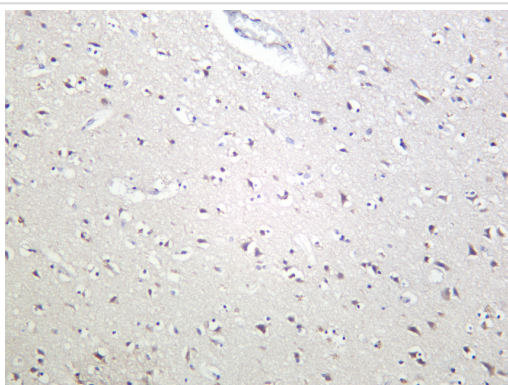
All lanes : STAT3 (Phospho-Ser727) Rabbit mAb at 1/1k dilution  
Lane 1 :A431 cell lysate Lane 2 :A431 cell lysate treated with 100ng/ml EGF 10min  
lysate/proteins at 20 µg per lane.  
SecondaryAll lanes : Goat Anti-Rabbit IgG H&L (HRP) at 1/20000 dilution  
Predicted band size: 88 kDa Observed band size: 98 kDa  
Exposure time: 5 seconds



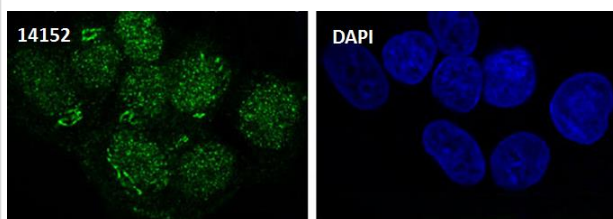
Formalin-fixed;paraffin-embedded rat brain tissue stained for STAT3 (Phospho-Ser727) using 14152 at 1/100 dilution in immunohistochemical analysis.



Formalin-fixed;paraffin-embedded rat kidney tissue stained for STAT3 (Phospho-Ser727) using 14152 at 1/100 dilution in immunohistochemical analysis.



Formalin-fixed;paraffin-embedded human brain tissue stained for STAT3 (Phospho-Ser727) using 14152 at 1/100 dilution in immunohistochemical analysis.



Immunocytochemistry/Immunofluorescence STAT3 (Phospho-Ser727) antibody (14152)  
ICC/IF staining of STAT3 (Phospho-Ser727) in A431 cells. Cells were fixed with 4% Paraformaldehyde permeabilized with 0.1% Triton X-100. Samples were incubated with 14152 at a working dilution of 1/100. The secondary antibody was Alexa FluorB 488 goat anti rabbit;used at a dilution of 1/500. Nuclei were counterstained with DAPI.

## Product Description

Signal transducer and transcription activator that mediates cellular responses to interleukins, KITLG/SCF and other growth factors. May mediate cellular responses to activated FGFR1, FGFR2, FGFR3 and FGFR4. Binds to the interleukin-6 (IL-6)-responsive elements identified in the promoters of various acute-phase protein genes. Activated by IL31 through IL31RA.

## Published Papers

Aysegul Dalmlzrak;Nur Selvi Gunel;Burcin Tezcanh Kaymaz;Fahri Sahin;Guray Saydam;Buket Kosova el at., Effects of Rituximab on JAK-STAT and NF-κB signaling pathways in acute lymphoblastic leukemia and chronic lymphocytic leukemia , (2019)

PMID:

---

---

Note: This product is for in vitro research use only and is not intended for use in humans or animals.