

## Raf1 (Phospho-Ser259) Rabbit mAb

Catalog No: #14228



Package Size: #14228-1 50ul #14228-2 100ul

Orders: order@signalwayantibody.com

Support: tech@signalwayantibody.com

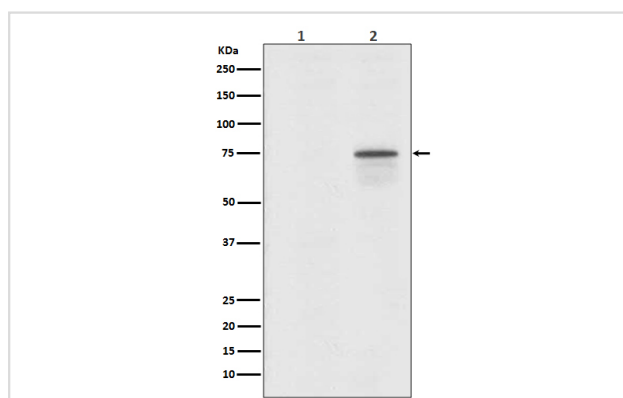
## Description

Product Name	Raf1 (Phospho-Ser259) Rabbit mAb
Host Species	Recombinant Rabbit
Clonality	Monoclonal
Isotype	Rabbit IgG
Purification	Affinity-chromatography
Applications	WB IHC
Species Reactivity	Human;Mouse;Rat
Specificity	Phospho-Raf1 (S259) Antibody detects endogenous levels of total Phospho-Raf1 (S259)
Immunogen Description	A synthesized peptide derived from human Phospho-Raf1 (S259)
Conjugates	Unconjugated
Other Names	C-Raf; CRAF; Protein kinase raf 1; RAF1; Raf proto-oncogene serine/threonine-protein kinase; kinase Raf1;
Accession No.	Uniprot:P04049
Calculated MW	73kDa
Formulation	Rabbit IgG in phosphate buffered saline , pH 7.4, 150mM NaCl, 0.02% sodium azide and 50% glycerol.
Storage	Store at +4°C short term. Store at -20°C long term. Avoid freeze / thaw cycle.

## Application Details

WB:1:500~1:1000IHC:1:50~1:100

## Images



Western blot analysis of Phospho-Raf1 (S259) expression in (1) 293T cell lysate; (2) 293T cell lysates treated with Okadaic Acid + Calyculin A.

## Product Description

Once activated Raf-1 can phosphorylate to activate the dual specificity protein kinases MEK1 and MEK2 which in turn phosphorylate to activate the serine/threonine specific protein kinases ERK1 and ERK2. Activated ERKs are pleiotropic effectors of cell physiology and play an important role in the control of gene expression involved in the cell division cycle, apoptosis, cell differentiation and cell migration.

---

Note: This product is for in vitro research use only and is not intended for use in humans or animals.