

## STAT3 Antibody

Catalog No: #21046



Package Size: #21046-1 50ul #21046-2 100ul

Orders: [order@signalwayantibody.com](mailto:order@signalwayantibody.com)Support: [tech@signalwayantibody.com](mailto:tech@signalwayantibody.com)

## Description

Product Name	STAT3 Antibody
Host Species	Rabbit
Clonality	Polyclonal
Purification	Antibodies were produced by immunizing rabbits with synthetic peptide and KLH conjugates. Antibodies were purified by affinity-chromatography using epitope-specific peptide.
Applications	WB IHC
Species Reactivity	Hu
Specificity	The antibody detects endogenous level of total STAT3 protein.
Immunogen Type	Peptide-KLH
Immunogen Description	Peptide sequence around aa. 725~729 (P-M-S-P-R) derived from Human STAT3.
Target Name	STAT3
Other Names	Acute-phase response factor
Accession No.	Swiss-Prot: P40763NCBI Protein: NP_003141.2
Concentration	1.0mg/ml
Formulation	Supplied at 1.0mg/mL in phosphate buffered saline (without Mg <sup>2+</sup> and Ca <sup>2+</sup> ), pH 7.4, 150mM NaCl, 0.02% sodium azide and 50% glycerol.
Storage	Store at -20°C for long term preservation (recommended). Store at 4°C for short term use.

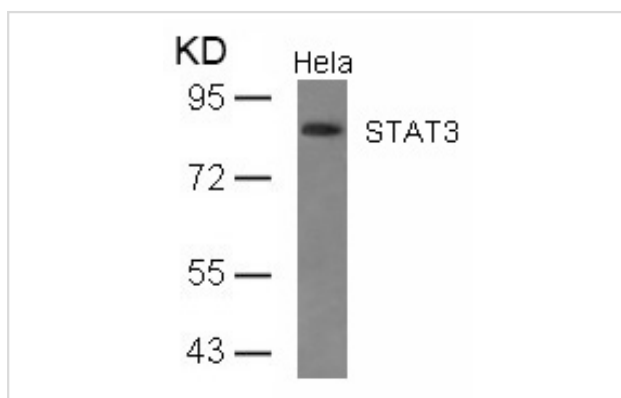
## Application Details

Predicted MW: 88kd

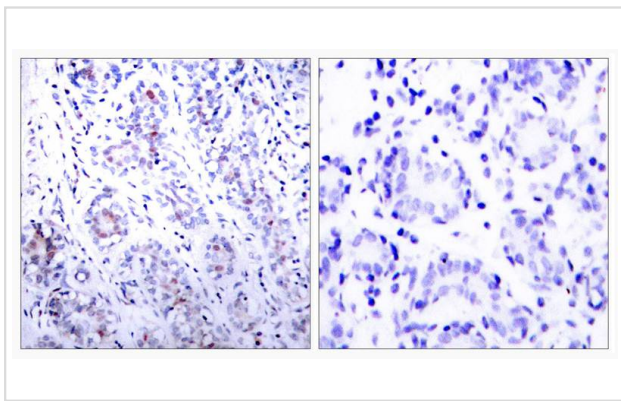
Western blotting: 1:500~1:1000

Immunohistochemistry: 1:50~1:100

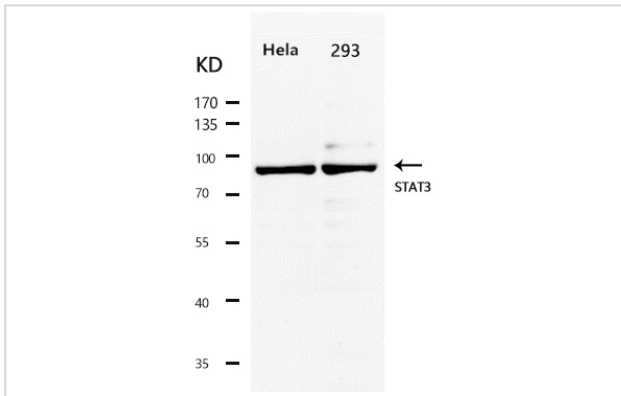
## Images



Western blot analysis of extracts from HeLa cells using STAT3(Ab-727) Antibody #21046.



Immunohistochemical analysis of paraffin-embedded human breast carcinoma tissue using STAT3(Ab-727) Antibody #21046(left) or the same antibody preincubated with blocking peptide(right).



Western Blot analysis of HeLa /293 cells using STAT3 Polyclonal Antibody

## Background

Transcription factor that binds to the interleukin-6 (IL-6)-responsive elements identified in the promoters of various acute-phase protein genes.

Activated by IL31 through IL31RA.

Heim M H, (1999) J Recept Signal Transduct Res. 19: 75-120.

Takeda K, et al. (1997) Proc Natl Acad Sci USA. 94: 3801-3804.

Cattlett-Falcone R, et al. (1999) Immunity. 10: 105-115.

Garcia R, et al. (1998) J Biomed Sci. 5: 79-85.

Bromberg J F, et al. (1999) Cell. 98: 295-303.

## Published Papers

el at., PIWI-Interacting RNA-004800 Is Regulated by S1P Receptor Signaling Pathway to Keep Myeloma Cell Survival. In Front Oncol on 2020 Apr 15 by Ma H, Wang H, et al..PMID: 32351883, , (2020)

[PMID:32351883](#)

el at., Resistance to bleomycin-induced lung fibrosis in MMP-8 deficient mice is mediated by interleukin-10. In PLoS One on 2010 Oct 7 by Emilio Garcí a-Prieto, Adriθ°n

Gonzθ°lez-Lθ°pez, et al..PMID: 20949050, , (2010)

[PMID:20949050](#)

el at., Induction of interleukin-10 is dependent on p38 mitogen-activated protein kinase pathway in macrophages infected with porcine reproductive and respiratory syndrome virus. In Virol J on 2012 Aug 21 by Jun Hou, Lianghai Wang, et al..PMID: 22909062, , (2012)

[PMID:22909062](#)

el at., A Guanidine-Rich Regulatory Oligodeoxynucleotide Improves type-2 Diabetes in Obese Mice by Blocking T-cell Differentiation. In EMBO Mol Med on 2012 Oct by Xiang Cheng, Jing Wang, et al..PMID:23027613

, , (2012)

[PMID:23027613](#)

el at., Migration Suppression of Small Cell Lung Cancer by Polysaccharides from Nostoc commune Vaucher. In J Agric Food Chem on 2016 Aug 17

by Min Guo, Guo-Bin Ding, et al. PMID: 27465400, (2016)

PMID:27465400

---

---

Note: This product is for in vitro research use only and is not intended for use in humans or animals.