

## VEGFR2 Polyclonal Antibody

Catalog No: #21079



Package Size: #21079-1 50ul #21079-2 100ul

Orders: [order@signalwayantibody.com](mailto:order@signalwayantibody.com)Support: [tech@signalwayantibody.com](mailto:tech@signalwayantibody.com)

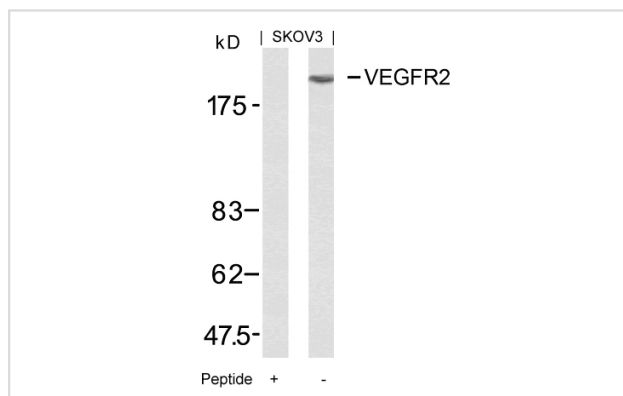
## Description

Product Name	VEGFR2 Polyclonal Antibody
Host Species	Rabbit
Clonality	Polyclonal
Purification	Antibodies were produced by immunizing rabbits with synthetic peptide and KLH conjugates. Antibodies were purified by affinity-chromatography using epitope-specific peptide.
Applications	WB;IHC;IF;IP;ELISA
Species Reactivity	Human;Mouse;Rat
Specificity	The antibody detects endogenous level of total VEGFR2 protein.
Immunogen Type	Peptide-KLH
Immunogen Description	Peptide sequence around aa.949~953 (K-D-Y-V-G) derived from Human VEGFR2.
Conjugates	Unconjugated
Target Name	VEGFR2
Other Names	FLK1; KDR; VGFR2; VGR2; kinase insert domain receptor
Accession No.	Swiss-Prot: P35968NCBI Protein: NP_002244.1
Calculated MW	151kDa
SDS-PAGE MW	230kDa
Concentration	1.0mg/ml
Formulation	Supplied at 1.0mg/mL in phosphate buffered saline (without Mg <sup>2+</sup> and Ca <sup>2+</sup> ), pH 7.4, 150mM NaCl, 0.02% sodium azide and 50% glycerol.
Storage	Store at -20°C for long term preservation (recommended). Store at 4°C for short term use.

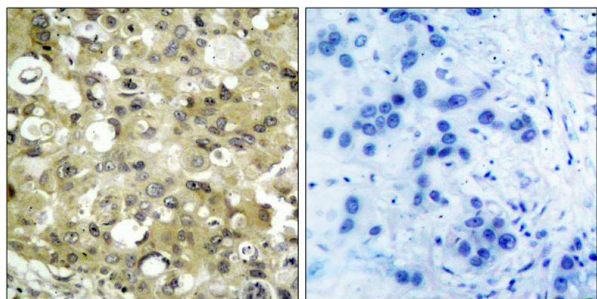
## Application Details

WB 1:2000-1:10000; IF 1:200-1:1000; IHC 1:1000-1:4000; ELISA 1:5000-1:20000; IP 1:50-1:200;

## Images



Western blot analysis of extracts from SKOV3 cells using VEGFR2(Ab-951) Antibody #21079 and the same antibody preincubated with blocking peptide.



Immunohistochemical analysis of paraffin-embedded human breast carcinoma tissue using VEGFR2(Ab-951) Antibody #21079(left) or the same antibody preincubated with blocking peptide(right).



Immunofluorescence staining of methanol-fixed MCF cells using VEGFR2(Ab-951) Antibody #21079.

## Background

Receptor for VEGF or VEGFC. Has a tyrosine-protein kinase activity. The VEGF-kinase ligand/receptor signaling system plays a key role in vascular development and regulation of vascular permeability. In case of HIV-1 infection, the interaction with extracellular viral Tat protein seems to enhance angiogenesis in Kaposi's sarcoma lesions

Zeng H, et al. (2001) J Biol Chem. 276(35): 32714-32719.

Dougher M, et al. (1999) Oncogene. 18(8): 1619-1627.

## Published Papers

Qi Zhao, Takako Yokozawa, Koichi Tsuneyama et al., Chotosan (Diateng San)-induced improvement of cognitive deficits in senescence-accelerated mouse (SAMP8) involves the amelioration of angiogenic/neurotrophic factors and neuroplasticity systems in the brain., Chinese Medicine, Volume 6, Number 1, 33(2011)

[PMID:21943225](#)

Qi Zhao, Takako Yokozawa, Noriko Yamabe et al., Kangen-karyu improves memory deficit caused by aging through normalization of neuro-plasticity-related signaling system and VEGF system in the brain., Journal of Ethnopharmacology, 131(2):377-385(2010)

[PMID:20637274](#)

Qi Zhao, Yimin Niu, Kinzo Matsumoto et al., Chotosan ameliorates cognitive and emotional deficits in an animal model of type 2 diabetes: possible involvement of cholinergic and VEGF/PDGF mechanisms in the brain., BMC Complementary and Alternative Medicine., 0.630555556(2012)

[PMID:23082896](#)

et al., Kangen-karyu improves memory deficit caused by aging through normalization of neuro-plasticity-related signaling system and VEGF system in the brain. In J Ethnopharmacol on 2010 Sep 15 by Qi Zhao, Takako Yokozawa, et al.. PMID:20637274, , (2010)

[PMID:20637274](#)

et al., Artesunate Inhibits Proliferation and Invasion of Mouse Hemangioendothelioma Cells in vitro and of Tumor Growth in vivo. In Oncol Lett on 2017 Nov by Ning Wang, Hongxia Chen, et al.. PMID: 29113263, , (2017)

[PMID:29113263](#)

el at., Maternal protein restriction alters VEGF signaling and decreases pulmonary alveolar in fetal rats.In Int J Clin Exp Pathol on 2014 May 15 by Xiaomei Liu , Yan Lin et al ..PMID: 25031729, , (2014)

[PMID:25031729](#)

el at., CD146 acts as a novel receptor for netrin-1 in promoting angiogenesis and vascular development.In Cell Res on 2015 Mar by Wei Chen, Yan Liu et al..PMID:25656845, , (2015)

[PMID:25656845](#)

el at., Possible involvement of VEGF signaling system in rescuing effect of endogenous acetylcholine on NMDA-induced long-lasting hippocampal cell damage in organotypic hippocampal slice cultures. In Neurochem Int on 2014 Sep by Chikako Inada, Yimin Niu,et al..PMID:24911952, , (2014)

[PMID:24911952](#)

el at., Loss of Phd2 cooperates with BRAFV600E to drive melanomagenesis.In Nat Commun.On 2018 Dec 21 by Liu S, Zhang G et al..PMID: 30575721, , (2018)

[PMID:30575721](#)

el at., Mesenchymal stem cells originating from ES cells show high telomerase activity and therapeutic benefits. In Differentiation on 2011 Oct by Nana Ninagawa, Rumi Murakami, et al..PMID: 21855203, , (2011)

[PMID:21855203](#)

---

Note: This product is for in vitro research use only and is not intended for use in humans or animals.