

cdc25C Antibody

Catalog No: #21145

Package Size: #21145-1 50ul #21145-2 100ul

Orders: order@signalwayantibody.comSupport: tech@signalwayantibody.com

Description

| | |
|-----------------------|-------------------------------------------------------------------------------------------------------------------------------------------------------------------------------|
| Product Name | cdc25C Antibody |
| Host Species | Rabbit |
| Clonality | Polyclonal |
| Purification | Antibodies were produced by immunizing rabbits with synthetic peptide and KLH conjugates. Antibodies were purified by affinity-chromatography using epitope-specific peptide. |
| Applications | WB IHC IF |
| Species Reactivity | Hu |
| Specificity | The antibody detects endogenous level of total cdc25C protein. |
| Immunogen Type | Peptide-KLH |
| Immunogen Description | Peptide sequence around aa.214~218 (S-P-S-M-P) derived from Human cdc25C. |
| Target Name | cdc25C |
| Other Names | CDC25M1; MPIP3; |
| Accession No. | Swiss-Prot: P30307NCBI Protein: NP_001781.2 |
| Concentration | 1.0mg/ml |
| Formulation | Supplied at 1.0mg/mL in phosphate buffered saline (without Mg ²⁺ and Ca ²⁺), pH 7.4, 150mM NaCl, 0.02% sodium azide and 50% glycerol. |
| Storage | Store at -20°C for long term preservation (recommended). Store at 4°C for short term use. |

Application Details

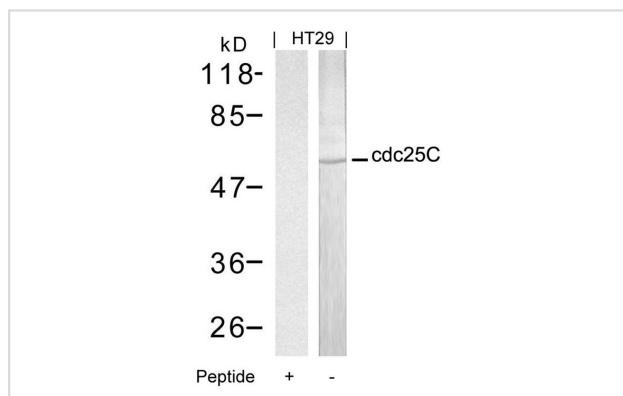
Predicted MW: 60kd

Western blotting: 1:500~1:1000

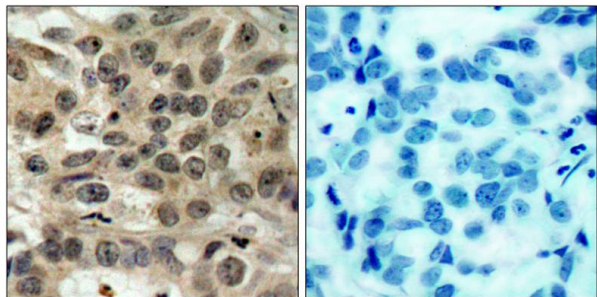
Immunohistochemistry: 1:50~1:100

Immunofluorescence: 1:100~1:200

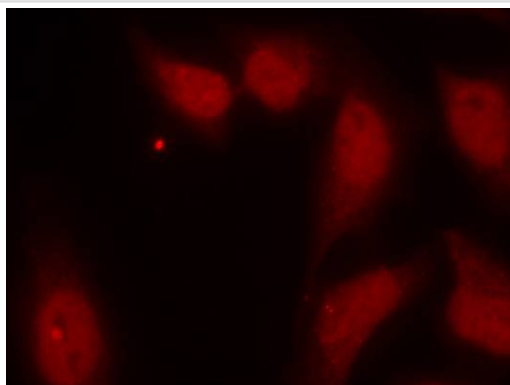
Images



Western blot analysis of extracts from HT29 cells using cdc25C(Ab-216) Antibody #21145 and the same antibody preincubated with blocking peptide.



Immunohistochemical analysis of paraffin-embedded human breast carcinoma tissue using cdc25C(Ab-216) Antibody #21145(left) or the same antibody preincubated with blocking peptide(right).



Immunofluorescence staining of methanol-fixed HeLa cells using cdc25C(Ab-216) Antibody #21145.

Background

cdc25C is highly conserved during evolution and it plays a key role in the regulation of cell division. The encoded protein is a tyrosine phosphatase and belongs to the Cdc25 phosphatase family. It directs dephosphorylation of cyclin B-bound CDC2 and triggers entry into mitosis. It is also thought to suppress p53-induced growth arrest. Multiple alternatively spliced transcript variants of this gene have been described, however, the full-length nature of many of them is not known.

Toyoshima-Morimoto F. et al. (2002) EMBO Rep. 3(4): 341-348.

Ferguson AM. et al. (2005) Mol Cell Biol. 25(7): 2853-2860.

Donzelli M. et al. (2003) EMBO Rep. 4(7): 671-677.

Chen F. et al. (2002) Proc Natl Acad Sci U S A. 99(4): 1990-1995.

Published Papers

et al., MEF2 is regulated by CaMKII ζ 2 and a HDAC4 ζ • DAC5 heterodimer in vascular smooth muscle cells. In Biochem J on 2012 May 15 by Roman Ginnan, Li Yan Sun, et al..PMID:22360269, (2012)

[PMID:22360269](#)

et al., PKM2 dephosphorylation by Cdc25A promotes the Warburg effect and tumorigenesis.In Nat Commun on 2016 Aug 3 by Ji Liang , Ruixiu Cao et al..PMID: 27485204, (2016)

[PMID:27485204](#)

et al., LncCCAT1 interaction protein PKM2 upregulates SREBP2 phosphorylation to promote osteosarcoma tumorigenesis by enhancing the Warburg effect and lipogenesis. In Int J Oncol on 2022 Apr by Feifei Pu, Jianxiang Liu,et al..PMID:35244192, (2022)

[PMID:35244192](#)

Note: This product is for in vitro research use only and is not intended for use in humans or animals.