

FAK Antibody

Catalog No: #21148

Package Size: #21148-1 50ul #21148-2 100ul

Orders: order@signalwayantibody.comSupport: tech@signalwayantibody.com

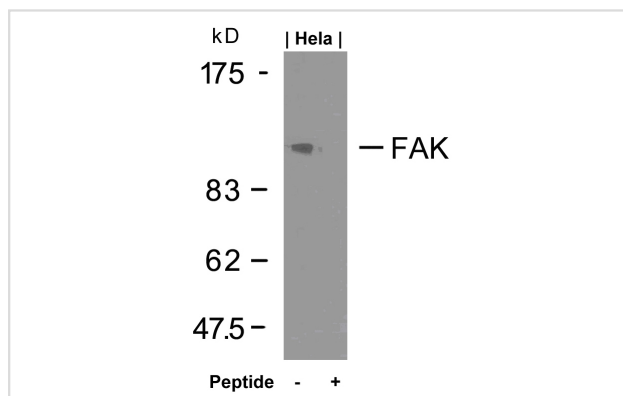
Description

| | |
|-----------------------|---|
| Product Name | FAK Antibody |
| Host Species | Rabbit |
| Clonality | Polyclonal |
| Purification | Antibodies were produced by immunizing rabbits with synthetic peptide and KLH conjugates. Antibodies were purified by affinity-chromatography using epitope-specific peptide. |
| Applications | WB;IHC;IF |
| Species Reactivity | Human;Mouse;Rat |
| Specificity | The antibody detects endogenous level of total FAK protein. |
| Immunogen Type | Peptide-KLH |
| Immunogen Description | Peptide sequence around aa.923~927 (K-V-Y-E-N) derived from Human FAK. |
| Conjugates | Unconjugated |
| Target Name | FAK |
| Other Names | FADK 1; FAK1; PTK2 |
| Accession No. | Swiss-Prot: Q05397NCBI Protein: NP_005598.3 |
| Calculated MW | 119kDa |
| SDS-PAGE MW | 125kDa |
| Concentration | 1.0mg/ml |
| Formulation | Supplied at 1.0mg/mL in phosphate buffered saline (without Mg ²⁺ and Ca ²⁺), pH 7.4, 150mM NaCl, 0.02% sodium azide and 50% glycerol. |
| Storage | Store at -20°C for long term preservation (recommended). Store at 4°C for short term use. |

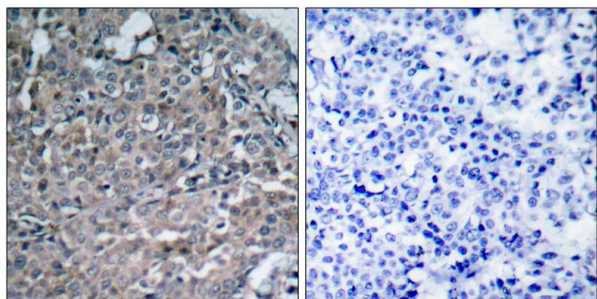
Application Details

WB 1:500-1:2000; IHC 1:50-1:200; IF 1:50-1:200;

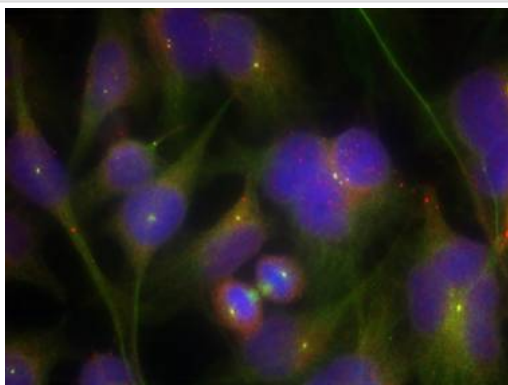
Images



Western blot analysis of extracts from HeLa cells using FAK(Ab-925) Antibody #21148 and the same antibody preincubated with blocking peptide.



Immunohistochemical analysis of paraffin-embedded human breast carcinoma tissue using FAK(Ab-925) Antibody #21148(left) or the same antibody preincubated with blocking peptide(right).



Immunofluorescence staining of methanol-fixed HeLa cells using FAK(Ab-925) Antibody #21148.

Background

Non-receptor protein-tyrosine kinase implicated in signaling pathways involved in cell motility, proliferation and apoptosis. Activated by tyrosine-phosphorylation in response to either integrin clustering induced by cell adhesion or antibody cross-linking, or via G-protein coupled receptor (GPCR) occupancy by ligands such as bombesin or lysophosphatidic acid, or via LDL receptor occupancy. Plays a potential role in oncogenic transformations resulting in increased kinase activity.

Sanders MA, et al. (2005) J Biol Chem; 280(25): 23516-22.

Cherubini A, et al. (2005) Mol Biol Cell; 16(6): 2972-83.

Toriumi Y, et al. (2003) FEBS Lett; 553(3): 419-22.

Shi Q, et al. (2003) Mol Biol Cell; 14(10): 4306-15.

Published Papers

el at., PTBP3 contributes to the metastasis of gastric cancer by mediating CAV1 alternative splicing. In Cell Death Dis. On 2018 May 1 by PMID: 29752441 , , (2018)

[PMID:29752441](#)

el at., Lipid raft regulates the initial spreading of melanoma A375 cells by modulating ϵ -Y1 integrin clustering. In Int J Biochem Cell Biol on 2013 Aug by Ruifei Wang, Jiajia Bi, et

al.. PMID: 23665237, , (2013)

[PMID:23665237](#)

el at., FOXQ1 Promotes Cancer Metastasis by PI3K/AKT Signaling Regulation in Colorectal Carcinoma. In Am J Transl Res on 2017 May 15 by Jia Yun Liu, Xiao Yu Wu, et al.. PMID: 28559972, , (2017)

[PMID:28559972](#)

el at., RGD and (β)-epigallocatechin-3-gallate modification enhanced biostability, bioactive and biofunctionality of acellular porcine cornea stroma crosslinked with oxidized dextran, , (2024)

[PMID:](#)

el at., Effect of cell culture density on dental pulp-derived mesenchymal stem cells with reference to osteogenic differentiation. In Sci Rep on 2019 Apr

1 by Sonoko Noda, Nobuyuki Kawashima, et al..PMID: 30931957, , (2019)

[PMID:30931957](#)

el at., Long non-coding RNA PVT1 promotes tumor progression by regulating the miR-143/HK2 axis In gallbladder cancer.In Mol Cancer on 2019 Mar 2 by Chen J, Yu Y, et al.. PMID: 30825877, , (2019)

[PMID:30931957](#)

el at., Luteolin reduces the invasive potential of malignant melanoma cells by targeting $\alpha_3\beta_1$ integrin and the epithelial-mesenchymal transition.In Acta Pharmacol Sin on 2012 Oct by Ruan JS, Liu YP,et al..PMID:22983392, , (2012)

[PMID:22983392](#)

el at., Inhibition of hypoxia-induced epithelial mesenchymal transition by luteolin in non-small cell lung cancer cells. In Mol Med Rep on 2012 Jul by Junshan Ruan, Lei Zhang, et al..PMID: 22552526, , (2012)

[PMID:22552526](#)

Byun Youngro;Hwang Hae Hyun;Jeong Hee Jeong;Kim Sung Wan;Lee Dong Yun;Okano Teruo;Yun Sangwu el at., Anticancer Effect of Heparin-Taurocholate Conjugate on Orthotopically Induced Exocrine and Endocrine Pancreatic Cancer, , (2021)

[PMID:34830928](#)

Note: This product is for in vitro research use only and is not intended for use in humans or animals.