

HSF1 Antibody

Catalog No: #21206

Package Size: #21206-1 50ul #21206-2 100ul

Orders: order@signalwayantibody.comSupport: tech@signalwayantibody.com

Description

Product Name	HSF1 Antibody
Host Species	Rabbit
Clonality	Polyclonal
Purification	Antibodies were produced by immunizing rabbits with synthetic peptide and KLH conjugates. Antibodies were purified by affinity-chromatography using epitope-specific peptide.
Applications	WB IHC
Species Reactivity	Hu
Specificity	The antibody detects endogenous level of total HSF1 protein.
Immunogen Type	Peptide-KLH
Immunogen Description	Peptide sequence around aa. 305~309 (P-Q-S-P-R) derived from Human HSF1.
Target Name	HSF1
Other Names	HSTF 1
Accession No.	Swiss-Prot: Q00613NCBI Protein: NP_005517.1
Concentration	1.0mg/ml
Formulation	Supplied at 1.0mg/mL in phosphate buffered saline (without Mg ²⁺ and Ca ²⁺), pH 7.4, 150mM NaCl, 0.02% sodium azide and 50% glycerol.
Storage	Store at -20°C for long term preservation (recommended). Store at 4°C for short term use.

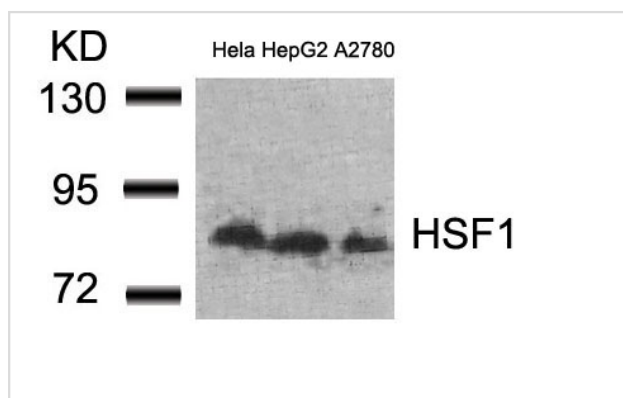
Application Details

Predicted MW: 82kd

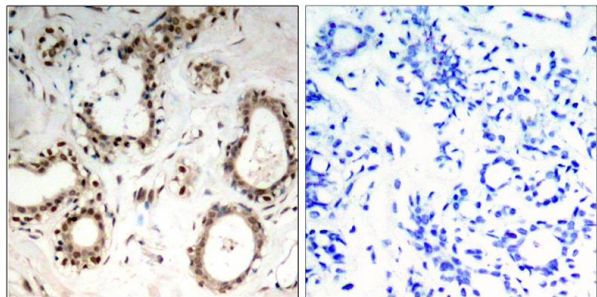
Western blotting: 1:500~1:1000

Immunohistochemistry: 1:50~1:100

Images



Western blot analysis of extracts from Hela, HepG2 and A2780 cells using HSF1(Ab-307) Antibody #21206.



Immunohistochemical analysis of paraffin-embedded human breast carcinoma tissue using HSF1(Ab-307) Antibody #21206(left) or the same antibody preincubated with blocking peptide(right).

Background

DNA-binding protein that specifically binds heat shock promoter elements (HSE) and activates transcription. In higher eukaryotes, HSF is unable to bind to the HSE unless the cells are heat shocked.

Guettouche T, et al. (2005) BMC Biochem ; 6(1): 4

Wang X, et al. (2003) Mol Cell Biol ; 23(17): 6013-6026

Jolly C, et al. (1999) Proc Natl Acad Sci USA; 96(12): 6769-6774.

Published Papers

el at., Solanesol protects human hepatic L02 cells from ethanol-induced oxidative injury via upregulation of HO-1 and Hsp70. In Toxicol In Vitro on 2015 Apr by Xiangyang Yao, Qin Bai et al..PMID:25645596, , (2015)

[PMID:25645596](#)

Note: This product is for in vitro research use only and is not intended for use in humans or animals.