

P38 MAPK Antibody

Catalog No: #21245



Package Size: #21245-1 50ul #21245-2 100ul

Orders: order@signalwayantibody.comSupport: tech@signalwayantibody.com

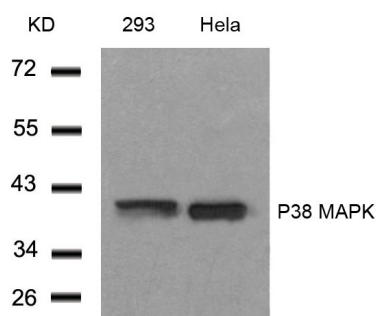
Description

Product Name	P38 MAPK Antibody
Host Species	Rabbit
Clonality	Polyclonal
Purification	Antibodies were produced by immunizing rabbits with synthetic peptide and KLH conjugates. Antibodies were purified by affinity-chromatography using epitope-specific peptide.
Applications	WB;IHC;IF
Species Reactivity	Human;Mouse;Rat
Specificity	The antibody detects endogenous level of total P38MAPK protein.
Immunogen Type	Peptide-KLH
Immunogen Description	Peptide sequence around aa. 180~184 (T-G-Y-V-A) derived from Human P38 MAPK.
Conjugates	Unconjugated
Target Name	P38 MAPK
Other Names	MAPK2; MAPKAPK-2; MAPKAPK2
Accession No.	Swiss-Prot: Q16539NCBI Protein: NP_001306.1
Calculated MW	41kDa
SDS-PAGE MW	41kDa
Concentration	1.0mg/ml
Formulation	Supplied at 1.0mg/mL in phosphate buffered saline (without Mg ²⁺ and Ca ²⁺), pH 7.4, 150mM NaCl, 0.02% sodium azide and 50% glycerol.
Storage	Store at -20°C for long term preservation (recommended). Store at 4°C for short term use.

Application Details

WB 1:500-1:2000; IHC 1:50-1:200; IF 1:50-1:200;

Images



Western blot analysis of extracts from 293 and HeLa cells using P38 MAPK(Ab-182) Antibody #21245.

Background

Responds to activation by environmental stress, pro-inflammatory cytokines and lipopolysaccharide (LPS) by phosphorylating a number of transcription factors, such as ELK1 and ATF2 and several downstream kinases, such as MAPKAPK2 and MAPKAPK5. Plays a critical role in the production of some cytokines, for example IL-6. May play a role in stabilization of EPO mRNA during hypoxic stress. Isoform Mxi2 activation is stimulated by mitogens and oxidative stress and only poorly phosphorylates ELK1 and ATF2. Isoform Exip may play a role in the early onset of apoptosis.

Ming Zheng, et al.(2005) The FASEB Journal. 19: 109-111

Bernt van den et al.(2001) Blink Immunology, 166: 582-587

Arshad Rahman, et al. (2004) Am J Physiol Lung Cell Mol Physiol 287: L1017-L1024

Osamu Yoshino, et al. (2003) Endocrinology & Metabolism Vol. 88: 2236-2241

Published Papers

Yi-Wen Gu, Dian-San Su, Jie Tian et al., Attenuating phosphorylation of p38 MAPK in the activated microglia: A new mechanism for intrathecal lidocaine reversing tactile allodynia following chronic constriction injury in rats., Neuroscience Letters, 431(2):129-134. (2008)

[PMID:18191894](#)

el at., In vitro-induced M2 type macrophages induces the resistance of prostate cancer cells to cytotoxic action of NK cells.In Exp Cell Res.On 2018 Mar 1 by Xu L, Shen M et al..PMID: 29408565, , (2018)

[PMID:29408565](#)

el at., Neuroendocrine differentiation contributes to radioresistance development and metastatic potential increase in non-small cell lung cancer.In Biochim Biophys Acta Mol Cell Res. On 2018 Dec by Zhu R, Yang X et al..PMID: 30262435, , (2018)

[PMID:30262435](#)

el at., Radiation Alters PD-L1/NKG2D Ligand Levels in Lung Cancer Cells and Leads to Immune Escape From NK Cell Cytotoxicity via IL-6-MEK/Erk Signaling Pathway.In Oncotarget on 2017 Jul 12 by Ming Jing Shen, Li Jun Xu,et al..PMID:29113321, , (2017)

[PMID:29113321](#)

el at., A solute carrier family 22 member 3 variant rs3088442 G→A associated with coronary heart disease inhibits lipopolysaccharide-induced inflammatory response. In J Biol Chem on 2015 Feb 27 by Lu Li, Meian He,et al..PMID:25561729, , (2015)

[PMID:25561729](#)

Note: This product is for in vitro research use only and is not intended for use in humans or animals.