

Gab1 Antibody

Catalog No: #21283

Package Size: #21283-1 50ul #21283-2 100ul

Orders: order@signalwayantibody.comSupport: tech@signalwayantibody.com

Description

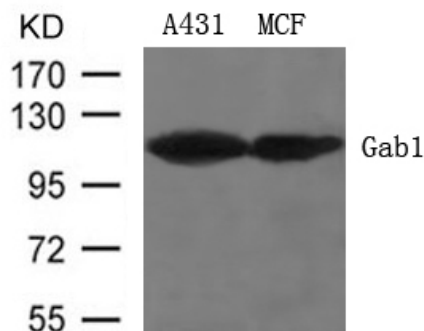
Product Name	Gab1 Antibody
Host Species	Rabbit
Clonality	Polyclonal
Purification	Antibodies were produced by immunizing rabbits with synthetic peptide and KLH conjugates. Antibodies were purified by affinity-chromatography using epitope-specific peptide.
Applications	WB
Species Reactivity	Human;Mouse
Specificity	The antibody detects endogenous level of total Gab1 protein.
Immunogen Type	Peptide-KLH
Immunogen Description	Peptide sequence around aa.625~629 (V-E-Y-L-D) derived from Human Gab1.
Conjugates	Unconjugated
Target Name	Gab1
Other Names	Growth factor receptor bound protein 2-associated protein 1
Accession No.	Swiss-Prot: Q13480NCBI Protein: NP_002030.2
Concentration	1.0mg/ml
Formulation	Supplied at 1.0mg/mL in phosphate buffered saline (without Mg ²⁺ and Ca ²⁺), pH 7.4, 150mM NaCl, 0.02% sodium azide and 50% glycerol.
Storage	Store at -20°C for long term preservation (recommended). Store at 4°C for short term use.

Application Details

Predicted MW: 110kd

Western blotting: 1:500~1:1000

Images



Western blot analysis of extracts from A431 and MCF cells using Gab1 (Ab-627) Antibody #21283.

Background

The protein encoded by Gab1 is a member of the IRS1-like multisubstrate docking protein family. It is an important mediator of branching tubulogenesis and plays a central role in cellular growth response, transformation and apoptosis. Two transcript variants encoding different isoforms have been found for this gene.

Anders Kallin, et al. (2004) J. Biol. Chem; 279: 17897 - 17904.

Hideto Kameda, et al. (2001) Cell Growth Differ; 12: 307.

Masaki Osawa, et al. (2002) J. Cell Biol; 158: 773.

Published Papers

el at., EGFR-Phosphorylated Platelet Isoform of Phosphofructokinase 1 Promotes PI3K Activation. IN Mol Cell.On 2018 Apr 19 by Lee JH, Liu R et al..PMID:29677490, , (2018)

[PMID:29677490](#)

Note: This product is for in vitro research use only and is not intended for use in humans or animals.