

TrkB Polyclonal Antibody

Catalog No: #21328

Package Size: #21328-1 50ul #21328-2 100ul

Orders: order@signalwayantibody.comSupport: tech@signalwayantibody.com

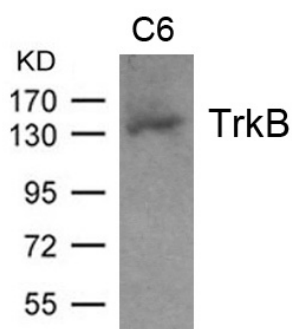
Description

Product Name	TrkB Polyclonal Antibody
Host Species	Rabbit
Clonality	Polyclonal
Purification	Antibodies were produced by immunizing rabbits with synthetic peptide and KLH conjugates. Antibodies were purified by affinity-chromatography using epitope-specific peptide.
Applications	WB IF
Species Reactivity	Human;Mouse;Rat
Specificity	The antibody detects endogenous levels of total TrkB protein.
Immunogen Type	Peptide-KLH
Immunogen Description	Peptide sequence around aa.703~707 (T-D-Y -Y-R) derived from Human TrkB.
Conjugates	Unconjugated
Target Name	TrkB
Other Names	TRKB; trk-B; GP145-TrkB
Accession No.	Swiss-Prot: Q16620NCBI Protein: NP_001007098.1
Calculated MW	92kDa
SDS-PAGE MW	90-95 kDa, 130-145 kDa
Concentration	1.0mg/ml
Formulation	Supplied at 1.0mg/mL in phosphate buffered saline (without Mg ²⁺ and Ca ²⁺), pH 7.4, 150mM NaCl, 0.02% sodium azide and 50% glycerol.
Storage	Store at -20°C for long term preservation (recommended). Store at 4°C for short term use.

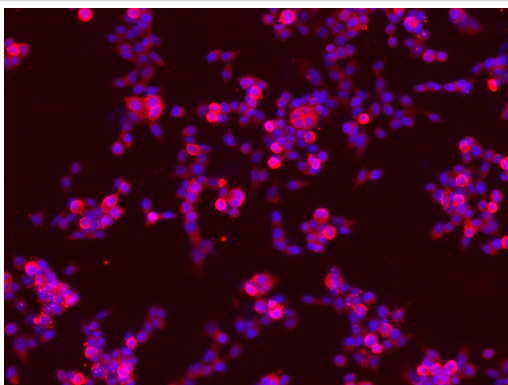
Application Details

WB 1:500-1:2000; IHC 1:100-1:300;

Images



Western blot analysis of extract from C6 cell and using TrkB(Ab-705) Antibody #21328.



Immunofluorescence staining of methanol-fixed NCI-h446 cells showing cytoplasmic staining using TrkB (Ab-705) Antibody #21328.

Background

Receptor for brain-derived neurotrophic factor (BDNF), neurotrophin-3 and neurotrophin-4/5 but not nerve growth factor (NGF). Involved in the development and/or maintenance of the nervous system. This is a tyrosine-protein kinase receptor. Known substrates for the TRK receptors are SHC1, PI-3 kinase, and PLC-gamma-1.

Woronowicz A, et al. Glycobiology. 2007 Jan;17(1):10-24. Mojsilovic-Petrovic J, et al. J Neurosci. 2006 Sep 6;26(36):9250-63. Lewis MA, et al. Mol Pharmacol. 2006 Apr;69(4):1396-404. Cai D, et al. Physiol Genomics. 2006 Feb 14;24(3):191-7.

Published Papers

el at., Altered TrkB-1 Function in Sortilin Deficient Mice Results in Decreased Depressive-Like Behavior .In Front Pharmacol. On 2018 Aug 6 by Moreno S, Devader CM et al..PMID:30127743, , (2018)

[PMID:30127743](#)

el at., The novel squamosamide derivative FLZ enhances BDNF/TrkB/CREB signaling and inhibits neuronal apoptosis in APP/PS1 mice.In Acta Pharmacol Sin on 2010 Mar by Li N, Liu GT et al..PMID:20154710, , (2010)

[PMID:20154710](#)

el at., Lactobacillus pentosus LPQ1 attenuates depressive-like behavior in BALB/C mice induced by chronic unpredictable mild stress (CUMS), , (2024)

[PMID:](#)

Note: This product is for in vitro research use only and is not intended for use in humans or animals.