

BMAL1 Antibody

Catalog No: #21415



Package Size: #21415-1 50ul #21415-2 100ul

Orders: order@signalwayantibody.com
Support: tech@signalwayantibody.com

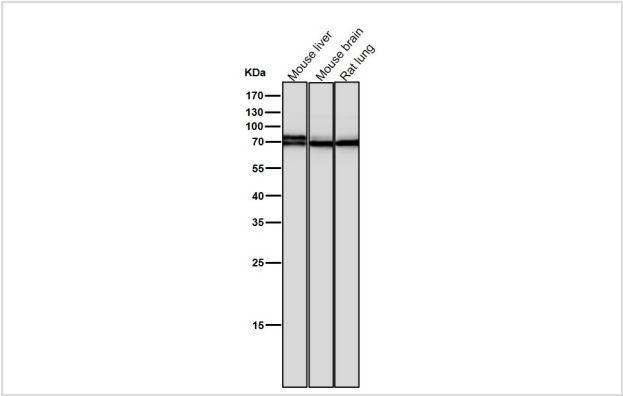
Description

Product Name	BMAL1 Antibody
Host Species	Rabbit
Clonality	Polyclonal
Purification	Affinity-chromatography
Applications	WB
Species Reactivity	Human;Mouse;Rat
Specificity	The antibody detects endogenous level of total BMAL1 protein.
Immunogen Type	Peptide-KLH
Immunogen Description	A synthesized peptide derived from human BMAL1
Conjugates	Unconjugated
Target Name	BMAL1
Other Names	MOP3; BMAL1c; ARNTL; TIC;
Accession No.	Swiss-Prot: O00327 NCBI Protein: NP_001025443.1
Formulation	Rabbit IgG in 10mM phosphate buffered saline , pH 7.4, 150mM sodium chloride, 0.05% BSA, 0.02% sodium azide and 50% glycerol.
Storage	Store at +4°C for short term. Store at -20°C for long term. Avoid freeze/thaw cycle.

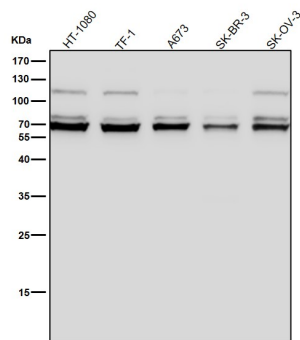
Application Details

WB 1:1000-1:2000

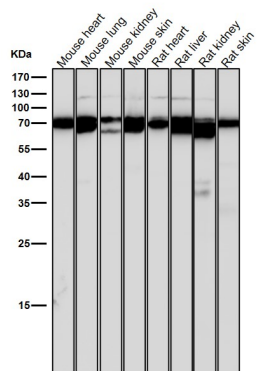
Images



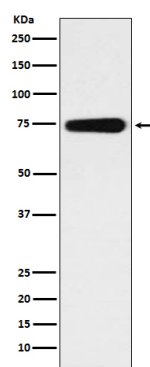
All lanes use the Antibody at 1:2K dilution for 1 hour at room temperature.



All lanes use the Antibody at 1:2K dilution for 1 hour at room temperature.



All lanes use the Antibody at 1:2K dilution for 1 hour at room temperature.



Western blot analysis of BMAL1 expression in human fetal heart lysate.

Background

The protein encoded by this gene is a basic helix-loop-helix protein that forms a heterodimer with CLOCK. This heterodimer binds E-box enhancer elements upstream of Period (PER1, PER2, PER3) and Cryptochrome (CRY1, CRY2) genes and activates transcription of these genes. PER and CRY proteins heterodimerize and repress their own transcription by interacting in a feedback loop with CLOCK/ARNTL complexes.

Published Papers

el at., Dual roles of FBXL3 in the mammalian circadian feedback loops are important for period determination and robustness of the clock. In *Proc Natl Acad Sci U S A* on 2013 Mar 19 by Guangsen Shi, Lijuan Xing, et al..PMID: 23471982, , (2013)

[PMID:23471982](#)

el at., Diurnal Control of Blood Pressure Is Uncoupled From Sodium Excretion. In *Hypertension* on 2020 Jun by Jermaine G Johnston, Joshua S Speed, et al..PMID:32306766, , (2020)

[PMID:32306766](#)

el at., Dysregulated clock gene expression and abnormal diurnal regulation of hippocampal inhibitory transmission and spatial memory in amyloid precursor protein transgenic mice.

In *Neurobiol Dis* on 2021 Oct by Allison R Fusilier, Jennifer A Davis,et al..PMID:34333153, , (2021)

Note: This product is for in vitro research use only and is not intended for use in humans or animals.