

## MCL1 Antibody

Catalog No: #21440

Package Size: #21440-1 50ul #21440-2 100ul

Orders: [order@signalwayantibody.com](mailto:order@signalwayantibody.com)Support: [tech@signalwayantibody.com](mailto:tech@signalwayantibody.com)

## Description

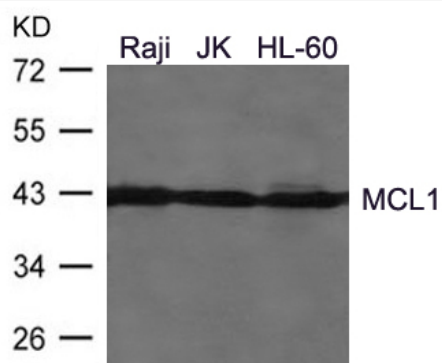
Product Name	MCL1 Antibody
Host Species	Rabbit
Clonality	Polyclonal
Purification	Antibodies were produced by immunizing rabbits with synthetic peptide and KLH conjugates. Antibodies were purified by affinity-chromatography using epitope-specific peptide.
Applications	WB
Species Reactivity	Human;Rat
Specificity	The antibody detects endogenous level of total MCL1 protein.
Immunogen Type	Peptide-KLH
Immunogen Description	Peptide sequence around aa.148~152(N-N-T-S-T) derived from Human MCL1.
Conjugates	Unconjugated
Target Name	MCL1
Other Names	TM; EAT; MCL1L; BCL2L3; mcl1/EAT
Accession No.	Swiss-Prot: Q07820NCBI Protein: NP_068779.1
Concentration	1.0mg/ml
Formulation	Supplied at 1.0mg/mL in phosphate buffered saline (without Mg <sup>2+</sup> and Ca <sup>2+</sup> ), pH 7.4, 150mM NaCl, 0.02% sodium azide and 50% glycerol.
Storage	Store at -20°C for long term preservation (recommended). Store at 4°C for short term use.

## Application Details

Predicted MW: 42kd

Western blotting: 1:500~1:1000

## Images



Western blot analysis of extracts from Raji, JK, HL-60 cells using MCL1 Antibody #21440.

## Background

Involved in the regulation of apoptosis versus cell survival, and in the maintenance of viability but not of proliferation. Mediates its effects by interactions with a number of other regulators of apoptosis. Isoform 1 inhibits apoptosis. Isoform 2 promotes apoptosis.

Bingle C.D., Craig R.W., Swales B.M., Singleton V., Zhou P., Whyte M.K.B.J. Biol. Chem. 275:22136-22146(2000)

Zhang D., Li F., Weidner D., Mnjoyan Z.H., Fujise K.J. Biol. Chem. 277:37430-37438(2002)

Leu J.I.-J., Dumont P., Hafey M., Murphy M.E., George D.L. Nat. Cell Biol. 6:443-450(2004)

## Published Papers

el at., miR-137 and miR-197 induce apoptosis and suppress tumorigenicity by targeting MCL-1 in multiple myeloma. In Clin Cancer Res on 2015 May 15 by Yijun Yang , Fei Li et al.. PMID:25724519 , , (2015)

[PMID:25724519](#)

**Note:** This product is for in vitro research use only and is not intended for use in humans or animals.