

Her3/ErbB3 Antibody

Catalog No: #21510

Package Size: #21510-1 50ul #21510-2 100ul

Orders: order@signalwayantibody.com

Support: tech@signalwayantibody.com

Description

Product Name	Her3/ErbB3 Antibody
Host Species	Rabbit
Clonality	Polyclonal
Purification	Antibodies were produced by immunizing rabbits with synthetic peptide and KLH conjugates. Antibodies were purified by affinity-chromatography using epitope-specific peptide.
Applications	WB IHC
Species Reactivity	Human;Mouse;Rat
Specificity	The antibody detects endogenous level of total Her3/ErbB3 protein.
Immunogen Type	Peptide-KLH
Immunogen Description	Peptide sequence around aa. 1326~1330 (P-D-Y-W-H) derived from Human Her3/ErbB3.
Conjugates	Unconjugated
Target Name	Her3/ErbB3
Other Names	Tyrosine kinase-type cell surface receptor HER3
Accession No.	Swiss-Prot: P21860NCBI Protein: NP_001005915.1
Concentration	1.0mg/ml
Formulation	Supplied at 1.0mg/mL in phosphate buffered saline (without Mg ²⁺ and Ca ²⁺), pH 7.4, 150mM NaCl, 0.02% sodium azide and 50% glycerol.
Storage	Store at -20°C for long term preservation (recommended). Store at 4°C for short term use.

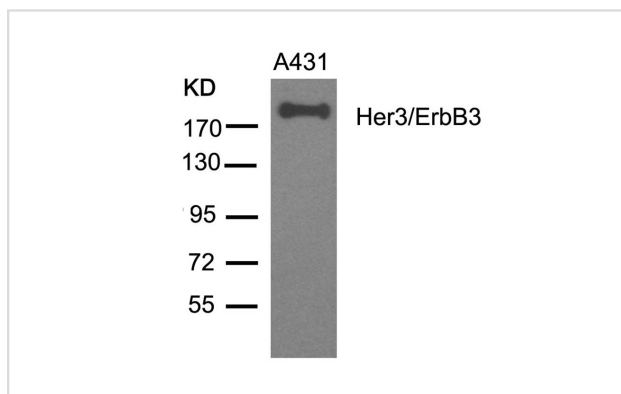
Application Details

Predicted MW: 185kd

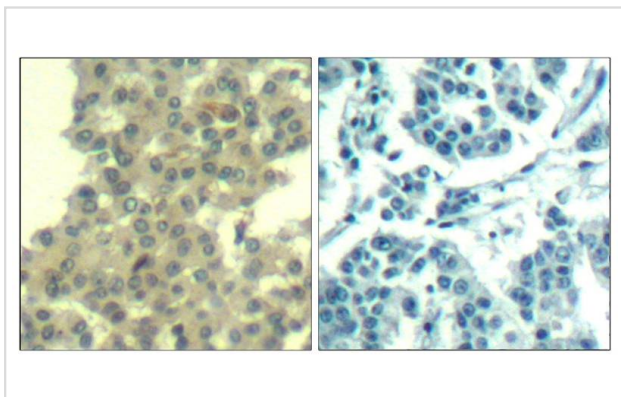
Western blotting: 1:500~1:1000

Immunohistochemistry: 1:50~1:100

Images



Western blot analysis of extracts from A431 cells using Her3/ErbB3(Ab-1328) Antibody #21510.



Immunohistochemical analysis of paraffin-embedded human breast carcinoma tissue using Her3/ErbB3(Ab-1328) Antibody #21510(left) or the same antibody preincubated with blocking peptide(right).

Background

Binds and is activated by neuregulins and NTAK.

Published Papers

el at., Activated ErbB3 translocates to the nucleus via clathrin-independent endocytosis, which is associated with proliferating cells.

In J Biol Chem on 2016 Feb 19 by Raymond Reif, Alshaimaa Adawy,et al..PMID:26719328, , (2016)

[PMID:26719328](#)

Note: This product is for in vitro research use only and is not intended for use in humans or animals.