

FoxA2(HNF3b) Antibody

Catalog No: #21607

Package Size: #21607-1 50ul #21607-2 100ul

Orders: order@signalwayantibody.comSupport: tech@signalwayantibody.com

Description

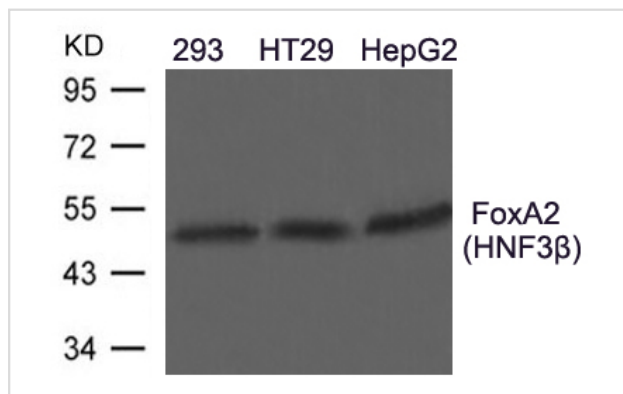
Product Name	FoxA2(HNF3b) Antibody
Host Species	Rabbit
Clonality	Polyclonal
Purification	Antibodies were produced by immunizing rabbits with synthetic peptide and KLH conjugates. Antibodies were purified by affinity-chromatography using epitope-specific peptide.
Applications	WB
Species Reactivity	Hu
Specificity	The antibody detects endogenous level of total FoxA2(HNF3b) protein.
Immunogen Type	Peptide-KLH
Immunogen Description	Peptide sequence around aa.435~439(A-S-P-L-A) derived from Human FoxA2(HNF3b).
Target Name	FoxA2(HNF3b)
Other Names	HNF3B; TCF3B;
Accession No.	Swiss-Prot: Q9Y261NCBI Protein: NP_068556.2
Concentration	1.0mg/ml
Formulation	Supplied at 1.0mg/mL in phosphate buffered saline (without Mg ²⁺ and Ca ²⁺), pH 7.4, 150mM NaCl, 0.02% sodium azide and 50% glycerol.
Storage	Store at -20°C for long term preservation (recommended). Store at 4°C for short term use.

Application Details

Predicted MW: 50kd

Western blotting: 1:500~1:1000

Images



Western blot analysis of extracts from 293, HT29, HepG2 cells using FoxA2(HNF3b) Antibody #21607.

Background

Transcription factor that is involved in embryonic development, establishment of tissue-specific gene expression and regulation of gene expression in

differentiated tissues. Is thought to act as a 'pioneer' factor opening the compacted chromatin for other proteins through interactions with nucleosomal core histones and thereby replacing linker histones at target enhancer and/or promoter sites. Binds DNA with the consensus sequence 5'-[AC]A[AT]T[AG]TT[GT][AG][CT]T[CT]-3' . In embryonic development is required for notochord formation. Involved in the development of multiple endoderm-derived organ systems such as the liver, pancreas and lungs; FOXA1 and FOXA2 seem to have at least in part redundant roles. Originally described as a transcription activator for a number of liver genes such as AFP, albumin, tyrosine aminotransferase, PEPCK, etc. Interacts with the cis-acting regulatory regions of these genes. Involved in glucose homeostasis; regulates the expression of genes important for glucose sensing in pancreatic beta-cells and glucose homeostasis. Involved in regulation of fat metabolism. Binds to fibrinogen beta promoter and is involved in IL6-induced fibrinogen beta transcriptional activation.

Wolfrum C., Besser D., Luca E., Stoffel M. Proc. Natl. Acad. Sci. U.S.A. 100:11624-11629(2003)

Motallebipour M., Ameer A., Reddy Bysani M.S. Genome Biol. 10:R129.0-R129.0(2009)

Nock A., Ascano J.M., Jones T., Barrero M.J. J. Biol. Chem. 284:19915-19926(2009)

Note: This product is for in vitro research use only and is not intended for use in humans or animals.