

# Blimp-1 Antibody

Catalog No: #21643



Package Size: #21643-1 50ul #21643-2 100ul

Orders: [order@signalwayantibody.com](mailto:order@signalwayantibody.com)  
Support: [tech@signalwayantibody.com](mailto:tech@signalwayantibody.com)

## Description

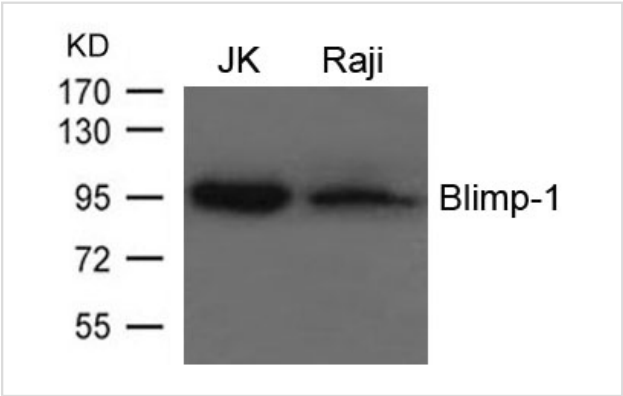
Product Name	Blimp-1 Antibody
Host Species	Rabbit
Clonality	Polyclonal
Purification	Antibodies were produced by immunizing rabbits with synthetic peptide and KLH conjugates. Antibodies were purified by affinity-chromatography using epitope-specific peptide.
Applications	WB
Species Reactivity	Hu
Specificity	The antibody detects endogenous levels of total Blimp-1 protein.
Immunogen Type	Peptide-KLH
Immunogen Description	Peptide sequence around aa.124~128(D-T-V-P-K) derived from Human Blimp-1
Target Name	Blimp-1
Other Names	PRDM1; PRDI-BF1; MGC118922; MGC118923; MGC118924
Accession No.	Swiss-Prot: O75626NCBI Protein: NP_001189.2
Concentration	1.0mg/ml
Formulation	Supplied at 1.0mg/mL in phosphate buffered saline (without Mg2+ and Ca2+), pH 7.4, 150mM NaCl, 0.02% sodium azide and 50% glycerol.
Storage	Store at -20°C for long term preservation (recommended). Store at 4°C for short term use.

## Application Details

Predicted MW: 95 100kd

Western blotting: 1:500~1:1000

## Images



Western blot analysis of extracts from JK and Raji cells using Blimp-1 Antibody #21643.

## Background

Transcriptional repressor that binds specifically to the PRDI element in the promoter of the beta-interferon gene. Drives the maturation of

B-lymphocytes into Ig secreting cells. "NANOS3 function in human germ cell development."  
Julaton V.T., Reijo Pera R.A. Hum. Mol. Genet. 20:1-13(2011)

---

Note: This product is for in vitro research use only and is not intended for use in humans or animals.