

CYFIP2 antibody

Catalog No: #22012

Package Size: #22012 100ul

Orders: order@signalwayantibody.comSupport: tech@signalwayantibody.com

Description

Product Name	CYFIP2 antibody
Host Species	Rabbit
Clonality	Polyclonal
Purification	Purified by antigen-affinity chromatography.
Applications	WB IHC
Species Reactivity	Hu
Immunogen Type	Recombinant protein
Immunogen Description	Recombinant protein fragment contain a sequence corresponding to a region within amino acids 346 and 610 of CYFIP2
Target Name	CYFIP2
Accession No.	NCBI Gene ID: 26999NCBI mRNA#: NM_014376NCBI Protein#: NP_055191
Concentration	1mg/ml
Formulation	Supplied in 0.1M Tris-buffered saline with 10% Glycerol (pH7.0). 0.01% Thimerosal was added as a preservative.
Storage	Store at -20°C for long term preservation (recommended). Store at 4°C for short term use.

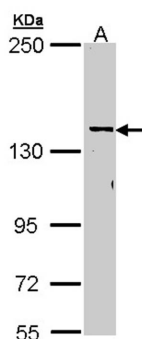
Application Details

Predicted MW: 146kd

Western blotting: 1:500-1:3000

Immunohistochemistry: 1:100-1:500

Images

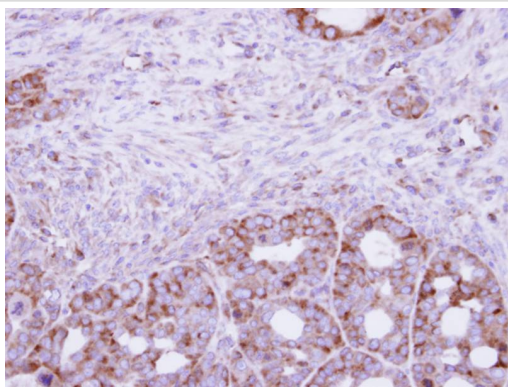


Sample (30 ug of whole cell lysate)

A: Molt-4

5% SDS PAGE

Primary antibody diluted at 1: 1000



Immunohistochemical analysis of paraffin-embedded NCIN87 xenograft, using CYFIP2 antibody at 1: 100 dilution.

Note: This product is for in vitro research use only and is not intended for use in humans or animals.