

SGSH antibody

Catalog No: #22031



Package Size: #22031 100ul

Orders: order@signalwayantibody.com

Support: tech@signalwayantibody.com

Description

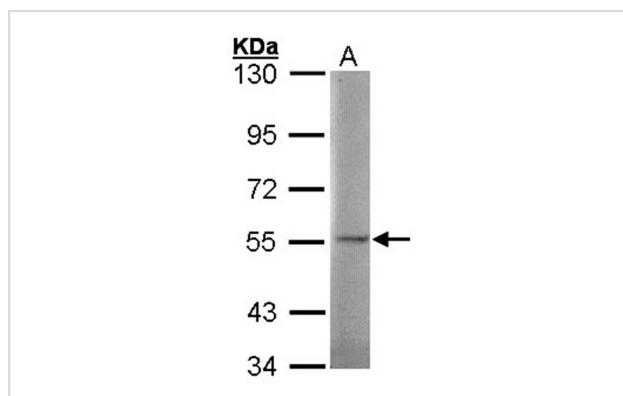
Product Name	SGSH antibody
Host Species	Rabbit
Clonality	Polyclonal
Purification	Affinity purified by Protein A.
Applications	WB
Species Reactivity	Hu
Immunogen Type	Recombinant protein
Immunogen Description	Recombinant protein fragment contain a sequence corresponding to a region within amino acids 44 and 200 of Human SGSH
Target Name	SGSH
Accession No.	NCBI Gene ID: 6448NCBI mRNA#: NM_000199NCBI Protein#: NP_000190
Concentration	2mg/ml
Formulation	Supplied in 0.1M Tris-buffered saline with 10% Glycerol (pH7.0). 0.01% Thimerosal was added as a preservative.
Storage	Store at -20°C for long term preservation (recommended). Store at 4°C for short term use.

Application Details

Predicted MW: 57kd

Western blotting: 1:500-1:3000

Images



Sample (30 ug of whole cell lysate)
 A: 293T
 7.5% SDS PAGE
 Primary antibody diluted at 1: 1000

Background

This gene encodes one of several enzymes involved in the lysosomal degradation of heparan sulfate. Mutations in this gene are associated with Sanfilippo syndrome A, one type of the lysosomal storage disease mucopolysaccharidosis III, which results from impaired degradation of heparan sulfate. Transcripts of varying sizes have been reported but their biological validity has not been determined. [provided by RefSeq]

Note: This product is for in vitro research use only and is not intended for use in humans or animals.