

MAF1 antibody

Catalog No: #22052

Package Size: #22052 100ul

Orders: order@signalwayantibody.comSupport: tech@signalwayantibody.com

Description

Product Name	MAF1 antibody
Host Species	Rabbit
Clonality	Polyclonal
Purification	Purified by antigen-affinity chromatography.
Applications	WB IF
Species Reactivity	Hu
Immunogen Type	Recombinant protein
Immunogen Description	Recombinant protein fragment contain a sequence corresponding to a region within amino acids 1 and 171 of MAF1
Target Name	MAF1
Accession No.	NCBI Gene ID: 84232NCBI mRNA#: NM_032272NCBI Protein#: NP_115648
Concentration	1mg/ml
Formulation	Supplied in 0.1M Tris-buffered saline with 10% Glycerol (pH7.0). 0.01% Thimerosal was added as a preservative.
Storage	Store at -20°C for long term preservation (recommended). Store at 4°C for short term use.

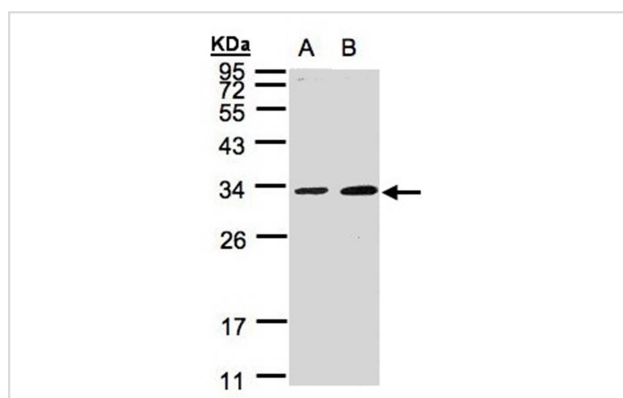
Application Details

Predicted MW: 29kd

Western blotting: 1:500-1:3000

Immunofluorescence: 1:100-1:200

Images



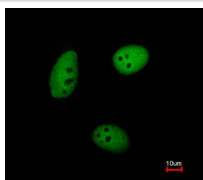
Sample(30 ug whole cell lysate)

A: A431

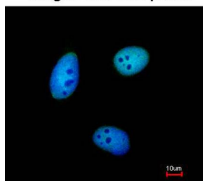
B: MOLT4

12% SDS PAGE

Primary antibody diluted at 1: 1000



Merged with DNA probe



Immunofluorescence analysis of paraformaldehyde-fixed HeLa, using MAF1 antibody at 1: 200 dilution.

Background

This gene encodes a protein that is similar to Maf1, a *Saccharomyces cerevisiae* protein highly conserved in eukaryotic cells. Yeast Maf1 is a negative effector of RNA polymerase III (Pol III). It responds to changes in the cellular environment and represses pol III transcription. Biochemical studies identified the initiation factor TFIIIB as a target for Maf1-dependent repression. [provided by RefSeq]

Note: This product is for in vitro research use only and is not intended for use in humans or animals.