

## Njmu-R1 antibody

Catalog No: #22401



Package Size: #22401 100ul

Orders: [order@signalwayantibody.com](mailto:order@signalwayantibody.com)Support: [tech@signalwayantibody.com](mailto:tech@signalwayantibody.com)

## Description

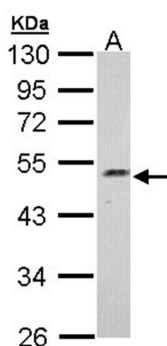
Product Name	Njmu-R1 antibody
Host Species	Rabbit
Clonality	Polyclonal
Purification	Purified by antigen-affinity chromatography.
Applications	WB
Species Reactivity	Hu
Immunogen Type	Recombinant protein
Immunogen Description	Recombinant protein fragment contain a sequence corresponding to a region within amino acids 1 and 185 of human C17orf75
Target Name	Njmu-R1
Accession No.	NCBI Gene ID: 64149NCBI mRNA#: NM_022344NCBI Protein#: NP_071739
Concentration	0.8mg/ml
Formulation	Supplied in 0.1M Tris-buffered saline with 10% Glycerol (pH7.0). 0.01% Thimerosal was added as a preservative.
Storage	Store at -20°C for long term preservation (recommended). Store at 4°C for short term use.

## Application Details

Predicted MW: 45kd

Western blotting: 1:500-1:3000

## Images



Sample (30 ug of whole cell lysate)  
A: Hep G2  
10% SDS PAGE  
Primary antibody diluted at 1: 1000

Note: This product is for in vitro research use only and is not intended for use in humans or animals.