

## G protein-coupled receptor 120 antibody

Catalog No: #22831



Package Size: #22831 100ul

Orders: [order@signalwayantibody.com](mailto:order@signalwayantibody.com)Support: [tech@signalwayantibody.com](mailto:tech@signalwayantibody.com)

## Description

Product Name	G protein-coupled receptor 120 antibody
Host Species	Rabbit
Clonality	Polyclonal
Purification	Purified by antigen-affinity chromatography.
Applications	WB IHC
Species Reactivity	Hu
Immunogen Type	Peptide
Immunogen Description	Synthetic peptide contain a sequence corresponding to a region within amino acids 1 and 41 of Human GPR120
Target Name	G protein-coupled receptor 120
Accession No.	NCBI Gene ID: 338557NCBI mRNA#: NM_181745NCBI Protein#: NP_859529
Concentration	1mg/ml
Formulation	Supplied in 0.1M Tris-buffered saline with 10% Glycerol (pH7.0). 0.01% Thimerosal was added as a preservative.
Storage	Store at -20°C for long term preservation (recommended). Store at 4°C for short term use.

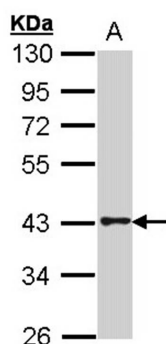
## Application Details

Predicted MW: 42kd

Western blotting: 1:500-1:2000

Immunohistochemistry: 1:50-1:500

## Images

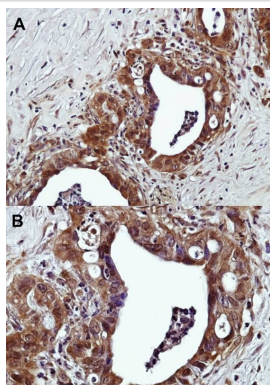


Sample (30 ug of whole cell lysate)

A: HeLa

10% SDS PAGE

Primary antibody diluted at 1: 2000



A:Immunohistochemical analysis of paraffin-embedded Human prostate adenocarcinoma, using GPR120 antibody at 1: 500 dilution.(20X).

B:Immunohistochemical analysis of paraffin-embedded Human prostate adenocarcinoma, using GPR120 antibody at 1: 500 dilution.(40X)

## Background

GPR120 is a member of the rhodopsin family of G protein-coupled receptors (GPRs) (Fredriksson et al., 2003 [PubMed 14623098]).[supplied by OMIM]

Note: This product is for in vitro research use only and is not intended for use in humans or animals.