

PACp antibody

Catalog No: #22925

Package Size: #22925 100ul

Orders: order@signalwayantibody.comSupport: tech@signalwayantibody.com

Description

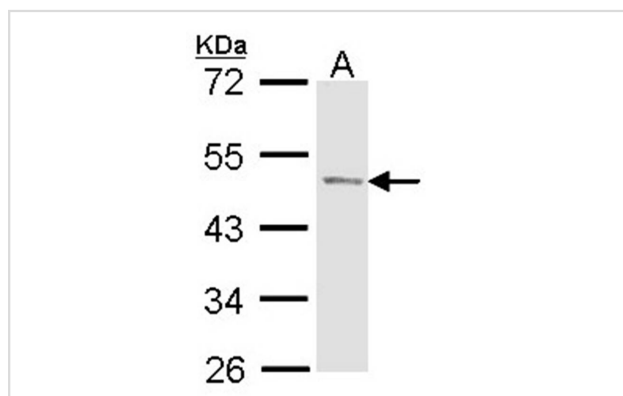
Product Name	PACp antibody
Host Species	Rabbit
Clonality	Polyclonal
Purification	Purified by antigen-affinity chromatography.
Applications	WB
Species Reactivity	Hu
Immunogen Type	Recombinant protein
Immunogen Description	Recombinant protein fragment contain a sequence corresponding to a region within amino acids 177 and 372 of Human ACP
Target Name	PACp
Accession No.	NCBI Gene ID: 55NCBI mRNA#: BC007460NCBI Protein#: AAH07460
Concentration	0.8mg/ml
Formulation	Supplied in 0.1M Tris-buffered saline with 20% Glycerol (pH7.0). 0.01% Thimerosal was added as a preservative.
Storage	Store at -20°C for long term preservation (recommended). Store at 4°C for short term use.

Application Details

Predicted MW: 48kd

Western blotting: 1:500-1:3000

Images



Sample (30 ug of whole cell lysate)

A: Molt-4

10% SDS PAGE

Primary antibody diluted at 1: 1000

Background

This gene encodes an enzyme that catalyzes the conversion of orthophosphoric monoester to alcohol and orthophosphate. It is synthesized under androgen regulation and is secreted by the epithelial cells of the prostate gland. An alternatively spliced transcript variant encoding a longer isoform has been found for this gene. This isoform contains a transmembrane domain and is localized in the plasma membrane-endosomal-lysosomal

Note: This product is for in vitro research use only and is not intended for use in humans or animals.